



CITYCOLLECTION

— AUSTRALIA —

2023 / 24 EDITION



DRESSING FOR WORK *made easy!*

The premise behind 'Dressing For Work Made Easy' is simple. Businesses require quality uniforms that are practical and reflect a strong brand identity. Staff perform better when they're comfortable and feel confident in their attire. Our entire uniform range is designed with you and your expectations in mind.

Contents

4-5	FIT FOR PURPOSE FIT FOR STYLE
6-7	EXCLUSIVELY INCLUSIVE
8-9	BRAND IT WITH COLOUR
10-13	SMART CASUAL
14-15	RECYCLED COLLECTION
16-35	CO-ORDINATES
36-59	TOPS & SHIRTS WOMEN
60-67	TOPS & SHIRTS MEN
68-75	SUITING SEPARATES
76-111	HEALTHCARE
112-125	PRODUCT SKETCHES
126	GARMENT SIZE GUIDE
127	INDEX

Mens shirts left to right:
MSH80 Cotton Comfort, **4207** Gingham City Check,
4774 Denim, **4265** Pinfeather, **MSH80** Cotton Comfort,
4222 Pippa Check, **MSH80** Cotton Comfort

Fit for purpose. Fit for *style.*

Modern corporate

Our range is designed for the modern professional requiring contemporary looks that are adaptable in any work environment. All roles have been thoughtfully considered in the design phase of each style.

Designs are:

- Trans-seasonal
- Co-ordinating
- Current and on trend

Designed for every body

All designs consider the concept of *individuality*. That's why across our men's and women's range there are a variety of *shapes, styles* and *fabric blends* to suit most body types – because every body is different.

Garments are:

- Flattering to all shapes and sizes
- Tailored for a range of movements
- Designed to appeal to all staff

Colour options

Create a look that is best suited to your brand. Our versatile and strong colour stories offer a broad range of styles, giving you flexible options to create or enhance your brand. By co-ordinating designs within your preferred colour selection you'll project a really *strong, unified* and *successful* team image.

Garments promote:

- Stylish colour stories
- Individuality
- A strong team appearance

Quality fabric & high standards

Our garments reflect the ultimate standards in quality and design. The fabrics have been carefully researched and developed to be functional, practical and versatile, without compromising comfort. We seek the latest in fabric technology offering our clients the very best options available.

Quality means:

- Attention to detail
- Innovative and tested fabrics
- Superior manufacturing

Easy care & easy wear

We have selected high quality fabrics with easy care finishes to meet the daily demands of your corporate wardrobe. Our range includes *stretch* for extra movement, *breathable* options to keep you cool and dry, and *wrinkle-free* styles to keep you looking your best throughout the day.

Designs are:

- Quick drying
- Soft and comfortable
- Durable

Stock service & delivery

All styles are available on stock service. This ensures your team will be fitted with the best quality uniform, *quickly* and *efficiently*.

Orders are:

- Processed quickly
- Managed by our Customer Service team
- Always our priority
- Accessible via our online portal



2147 Ezylin® Meghan
FJK35-992 Dianna Jacket
FJ365 R Jeans

Uniforms that are exclusively *inclusive*

Be it size, shape or complexion,
we understand that "one fit"
doesn't suit all - that's why
our styles flatter every body!



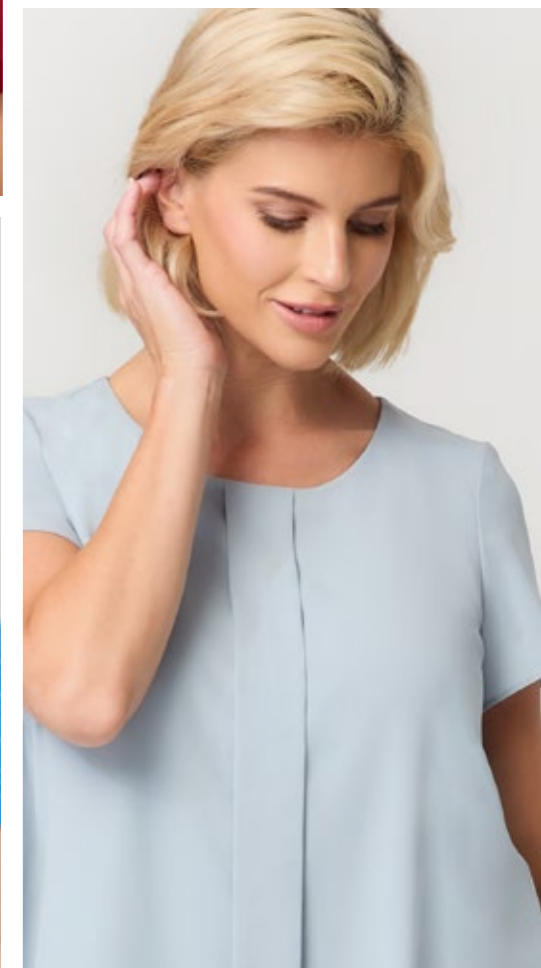
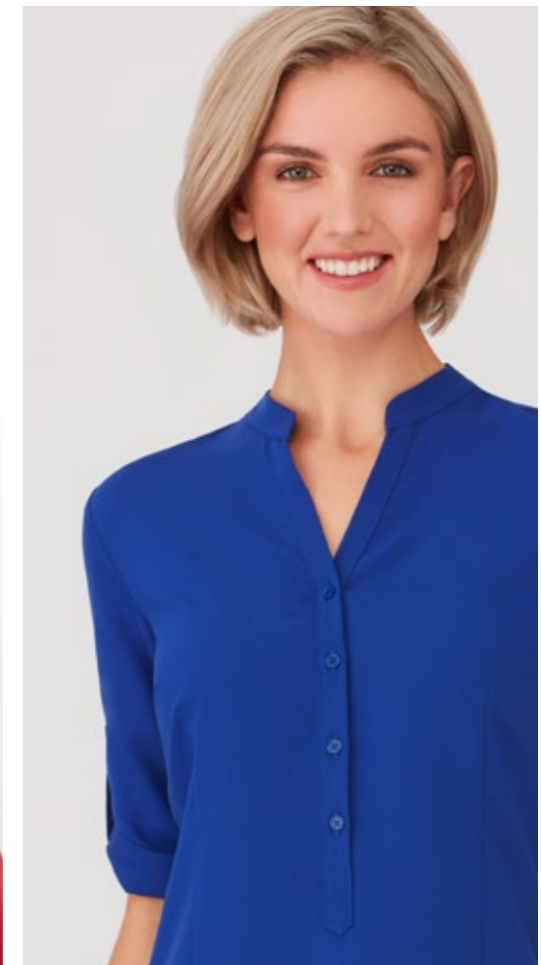
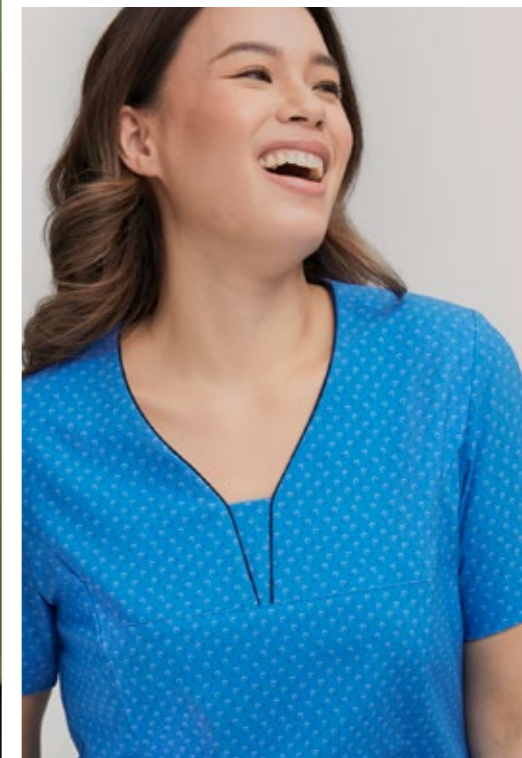
Left to right:
2147 Ezylin® Meghan
FJ365 R Jeans
CA22T Pharmacy/Dental Top
CA3P So Ezy Pant
2284 Zip Back Tunic
FJ365 R Jeans

Brand it with *colour*

This page
2284 Zip Back Tunic

Overleaf
clockwise from left
2222 Pippa Knit
2299 Knit Woven
2263 So Ezy
2287 Grace
2281 Heart Print Tunic

By co-ordinating designs with your colour selection, you'll project a strong, unified and successful team image, whilst maintaining a sense of individuality.



New style!

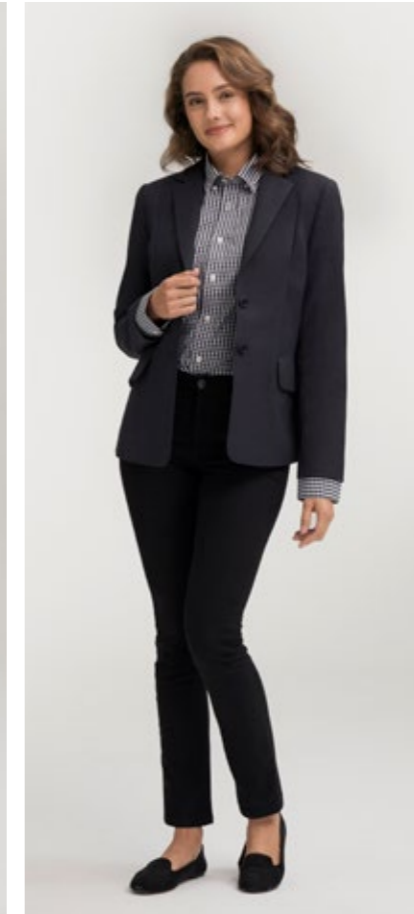
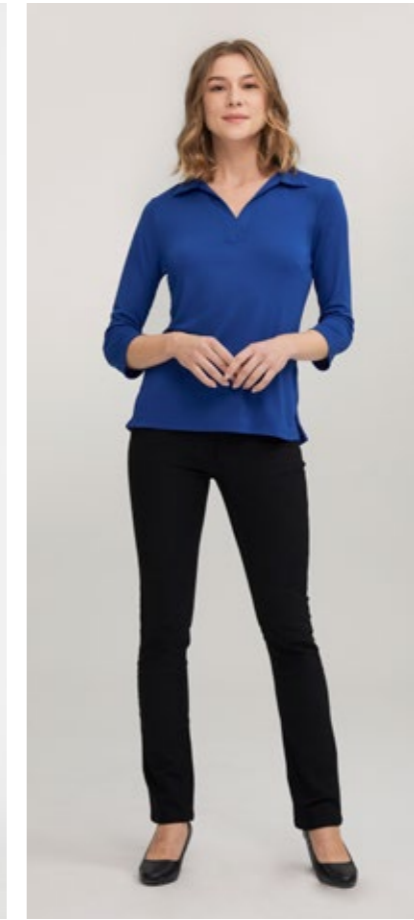
DENIM SHIRT

Womens 2774 Long sleeve
65% Lyocell, 35% Cotton
Sizes: 6-26, Semi-Fitted
Colour: Denim
with **FJ365** R Jeans

Mens 4774 Long sleeve
65% Lyocell, 35% Cotton
S-5XL, Sports Fit
Colour: Denim
with **MJ365** R Jeans

Smart casual

Now your team can show some style with their uniforms. Featuring a range of professional, yet casual garments with soft, versatile designs that are easy care and really easy to wear.



Top row: 2275 Bella with **FJ365** R Jeans, 2273 Ella with **FJ365** R Jeans, 2147 Ezylin® Meghan with **FJ365** R Jeans
Bottom row: 4207 Gingham City Check with **MJ365** R Jeans, 4207 Gingham City Check with **FJK35-992** Dianna Jacket and **FJ365** R Jeans, 4145 Ezylin® with **MJ365** R Jeans



THE **R** JEANS

Our R Jeans combine comfort and durability with ethical production practices and environmental sustainability benefits.

- ✓ Recycled polyester
- ✓ Modern styling and fit with 360° comfort
- ✓ Mid rise & slim straight leg
- ✓ Internal elastic waist for the perfect fit
- ✓ High-performance 4-Way Stretch
- ✓ Pre-washed for extra comfort



FJ365 R Jeans
64% Cotton, 34% Recycled Polyester, 2% Spandex
Sizes: 6 - 26. Modern Fit

MJ365 R Jeans
64% Cotton, 34% Recycled Polyester, 2% Spandex
Sizes: 77, 82, 87, 92, 97, 102, 107, 112, 117. Modern Fit



Shirts left to right:
4773 Oliver, 2175 City Stretch® Spot Hi-Lo,
2225 City Overknit **MSH80** Cotton Comfort



The Recycled Collection

- ✓ 99% of City Collection healthcare range is made from recycled yarns
- ✓ Sustainable and accredited products

2284 Zip Back Tunic
CA7P Jogger

As a uniform wholesaler, we have a responsibility to the wider community, not just the people who wear our garments.

Ethical Sourcing

We value the importance of sustainability and ethically manufactured products. We adopt ethical standards throughout our entire production process from selecting the right fabrics to manufacturers of the garment.

Packaging

City Collection is committed to using sustainable and accredited products – be it yarns, garments, packaging and swing tickets.

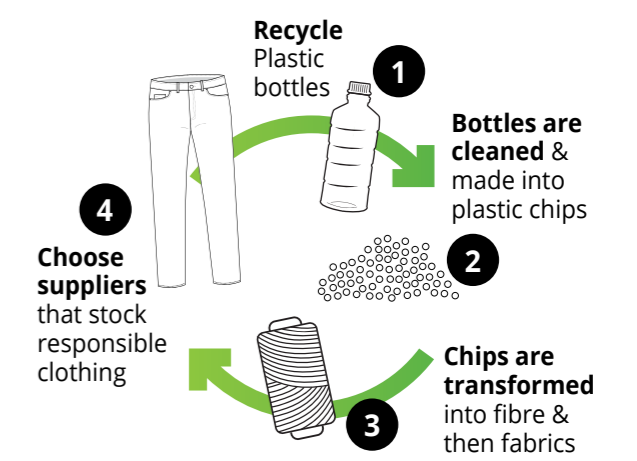
Community

Support us, as we continue to raise awareness about breast cancer and contribute to it's community. It's not a one day event, but every day of the year. We will make a donation to the Breast Cancer Network for every pink garment and heart print tunic sold. We've got you, You Got This CISTA!!!



Recycled Yarn

We are working with our fabric suppliers to reduce our impact on the environment. There are a number of fabrications that have changed over to recycled polyester – Ezylin®, Pippa, 4-Way Stretch, City Stretch® Spot, Petal Print and of course the R Jeans. With all of these fabrics, recycled polyester is made from recycling plastic bottles into chips. These are then transformed into polyester fibres. This process diverts unwanted plastic from landfill and gives this textile a second life.



Our certifications and supplier certifications include:



WRAP - Worldwide Responsible Accredited Production
Global social compliance dedicated to promoting safe, lawful, humane and ethical manufacturing, ensuring safe and secure labour practices and work environments.



Sedex - Empowering Responsible Supply Chains
Ethical trade membership organisation working with businesses to improve working conditions in global supply chains.



SA 8000 - Ethically Correct Certified Company
International certification standard that considers the social impact of operations, encouraging commitment to social accountability and ethical standards.



Oeko Tex Standard 100 - Tested for Harmful Substances
Standard for customer confidence and high product safety, ensuring garments are tested for harmful substances and are therefore safe for human health.



Wash & Wear, Easy Care Fabrics



Recycled Polyester



Anti-Bacterial Technology



CO-ORDINATES

with versatility

Our co-ordinating options work if you want that classic approach to uniform attire, otherwise you can mix and match them across our entire shirts and tops range.



City Stretch®
Pinfeather

Left to right:
4265 Long Sleeve with
MTRO-4060 Trousers

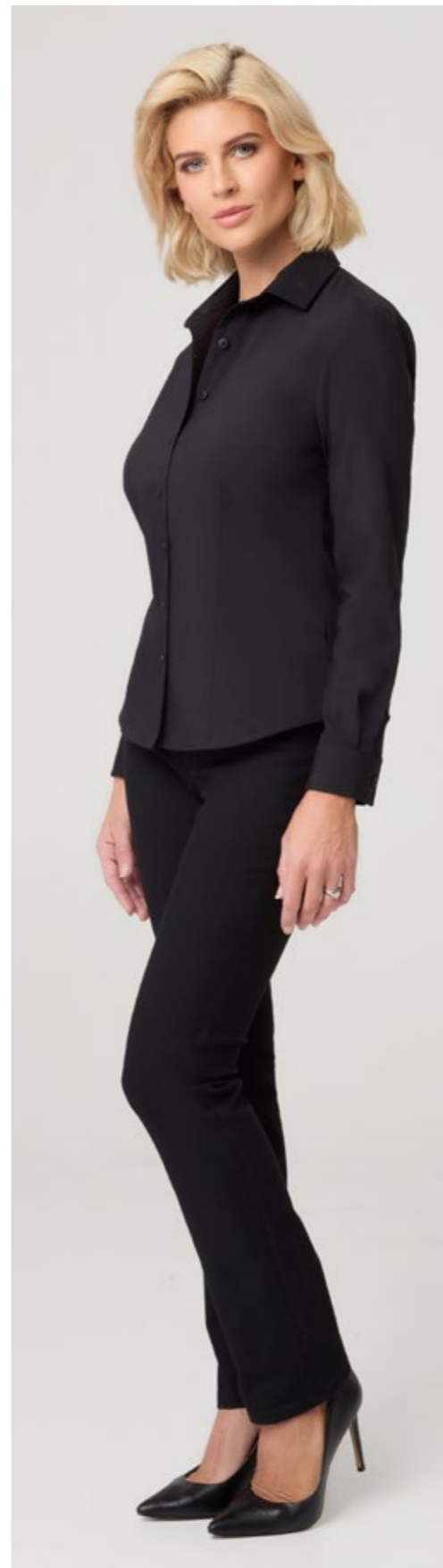
2267 Short Sleeve
FJ365 R Jeans

2264 Long Sleeve
FJ365 R Jeans



New styles

Key uniform staple, combining our perfect feel and fit. Pairs with the R Jeans or suiting co-ordinates. A good option shirt for the hospitality industry.



with Wonder Button



OLIVER

Mens 4773 Long Sleeve
65% Cotton, 30% Polyester, 5% Spandex
Sizes: S-5XL, Slim Fit

OLIVIA

Womens 2773 Long Sleeve
65% Cotton, 30% Polyester, 5% Spandex
Sizes: 6-30, Semi-Fitted

BLACK



New style!

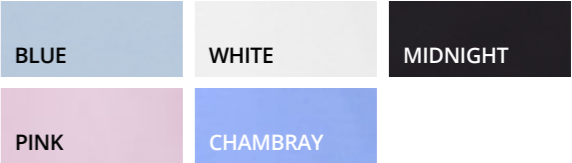
COTTON COMFORT

A soft hand feel makes this semi-fitted shirt an easy addition to anyone's uniform. Simple features such as non-sheer white fabric makes Cotton Comfort the perfect basic.



Womens FSH70 Long Sleeve
Polyester/Cotton
Sizes: 6-30, Semi-Fitted

Mens MSH80 Long Sleeve
Polyester/Cotton
Sizes: S-5XL, Slim Fit



Pink and Chambray available upon request.



She can wear it too!



Contrast trim

100% Cotton

GINGHAM CITY CHECK

Made from 100% cotton, a stylish two toned shadow check with contrast trim on the inside collar and front placket. Slim fit style with a designer back yoke for the modern professional look that suits both corporate and casual.

Mens 4207 Long Sleeve
100% Cotton with Natural Stretch
Sizes: S - 5XL, Slim Fit





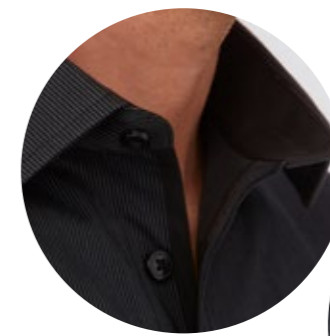
100%
Cotton



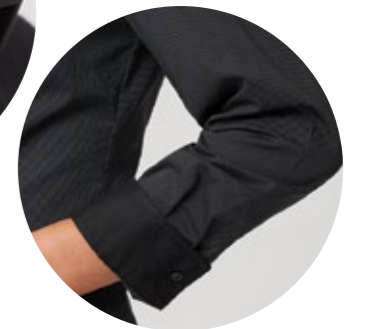
New
colour!

XPRESSO

A favourite choice for a trendy and modern uniform, made from 100% cotton fabric with natural stretch. Featuring the new 3/4 sleeve length in the women's style.



Contrast trims
around neckline
and cuffs



with
Wonder
Button

Mens
4257 Long Sleeve
100% Cotton with Natural Stretch
Sizes: S - 5XL, Slim Fit

Womens
2257 Long Sleeve
2258 3/4 Sleeve (Navy available upon request)
100% Cotton with Natural Stretch
Sizes: 6 - 30, Semi-Fitted



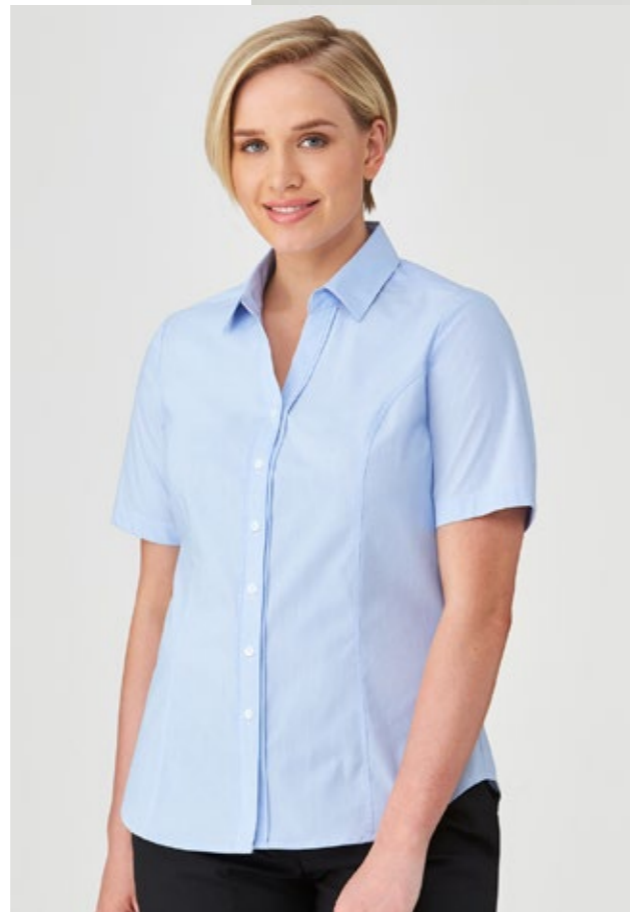
BLACK

NAVY

PINFEATHER

Professional corporate favourite. Ladies style includes lycra for extra comfort, a princess line, 3 sleeve lengths, a subtle colour palette of charcoal and blue. Co-ordinating mens style which is smart and professional and ranged in subtle tones.

*with
Wonder
Button*



Womens: 2264 Long Sleeve, **2265** 3/4 Sleeve, **2267** Short Sleeve
57% Polyester, 38% Cotton, 5% Lycra.
Sizes: 6 - 30, Semi-Fitted

Mens: 4265 Long Sleeve
60% Polyester, 40% Cotton. Sizes: S - 5XL, City Fit

BLUE

CHARCOAL

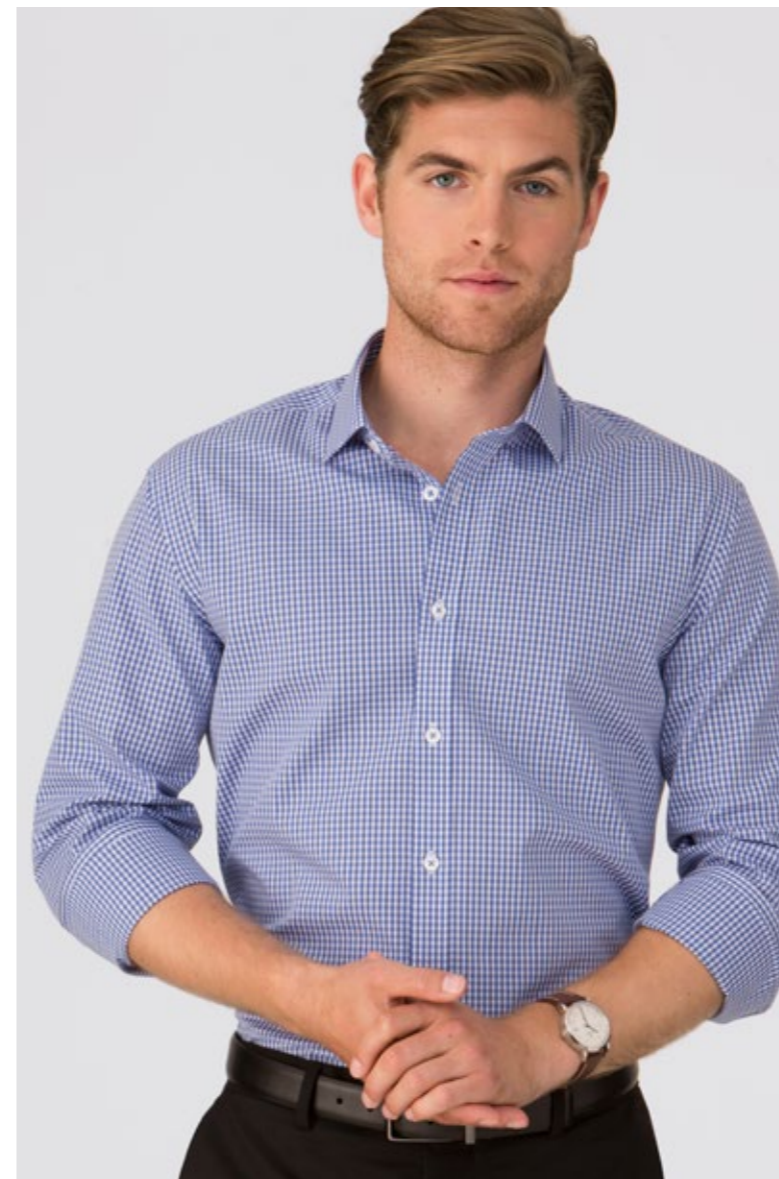




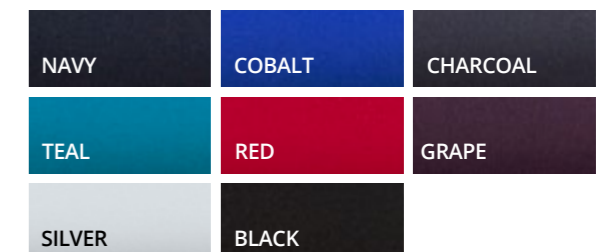
SO EZY

Co-ordinating styles to enhance your brand. The men's easy care, cotton-rich classic check in a slim fit reflects today's contemporary look. The women's style features a gathered action back in a soft lightweight fabric which is always a favourite.

Mens: 4263 Long Sleeve
60% Cotton, 40% Polyester.
Sizes: S - 5XL, Slim Fit



Womens: 2263 3/4 Sleeve with Roll-up Feature
Polyester with Natural Stretch. Sizes: 6 - 30, Action Fit





PIPPA CHECK

A stylish mini check in soft cotton-rich fabric. Contrast button stitching and a feature trim on the inside of the collar and cuffs. Women's style features the Wonder®Button to prevent gaping.



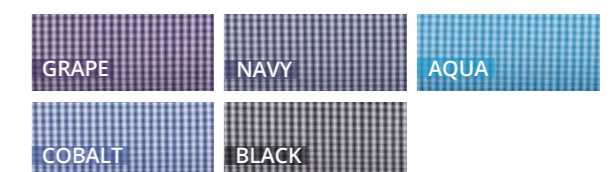
Button down collar

Mens 4222: Long Sleeve
60% Cotton, 40% Polyester. Sizes: S - 5XL, City Fit



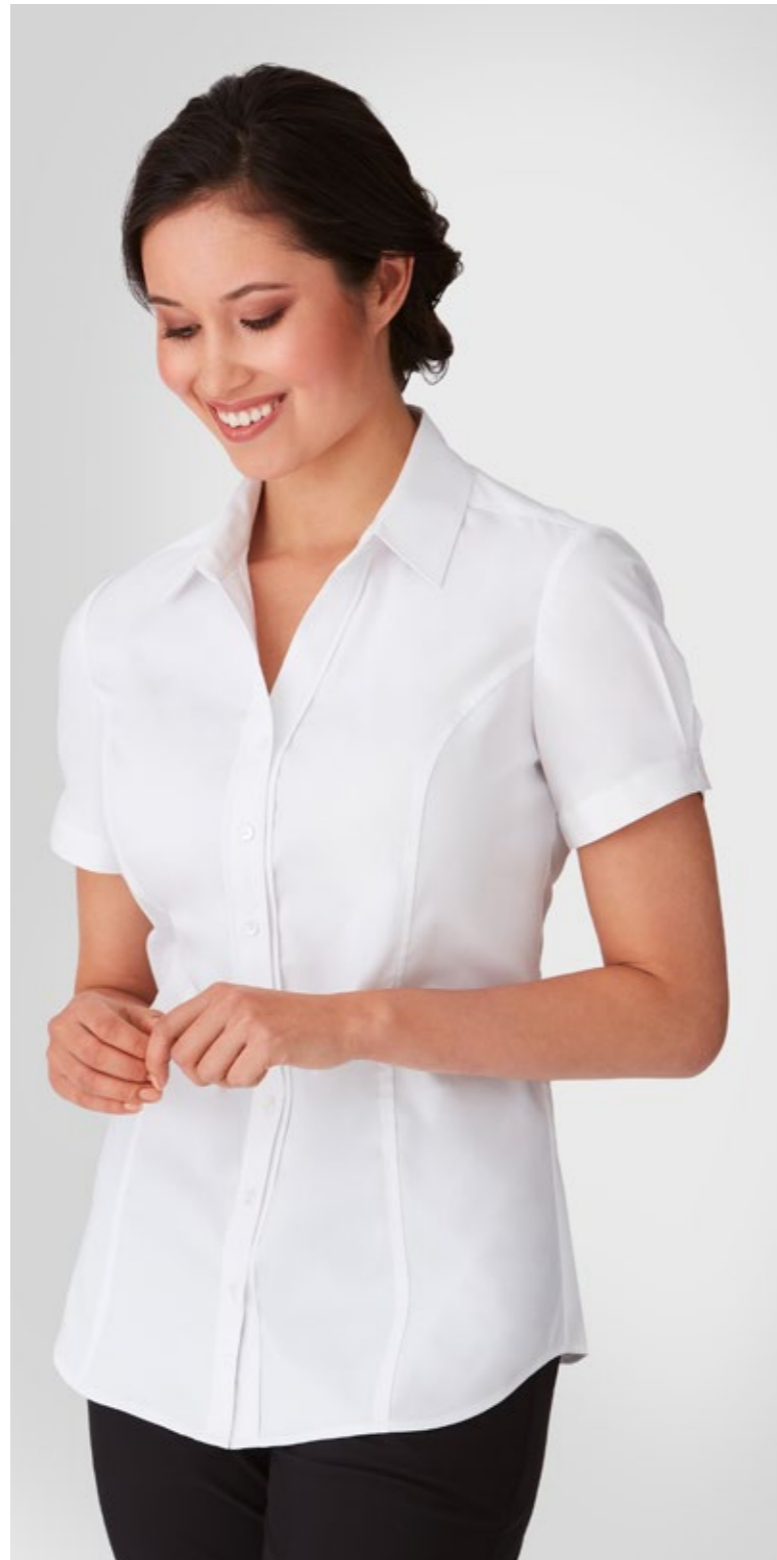
Fabric trim on inside collar and cuff

Womens 2444: 3/4 Sleeve
60% Cotton, 40% Polyester. Sizes: 6 - 26, Semi-Fitted



CITY STRETCH® CLASSIC

Styled with princess lines, this shirt enhances the overall silhouette. Also features a longer length, detailed front placket and a choice of three sleeve lengths.



Womens 2260 Long Sleeve, **2261** 3/4 Sleeve, **2262** Short Sleeve
45% Cotton, 37% Polyester, 16% CEO, 2% Lycra
Sizes: 6 - 30, Semi-Fitted

WHITE

TWILL SHIRT

A cotton-rich premium Twill shirt that features a sophisticated contrast trim inside the collar and sleeve placket. An exceptionally easy care fabric, this beautifully tailored garment is a corporate 'must have' piece.



Contrast trims

Mens 4200 Long Sleeve
60% Cotton, 40% Polyester
Sizes S - 5XL, City Fit

WHITE





MICRO CHECK

A traditional soft two tone check in an easy care cotton rich fabric in two colour options. Perfect for everyday wear.

Womens: 2121 3/4 Sleeve
55% Cotton, 45% Polyester. Sizes: 6 - 30, Semi-Fitted

Mens: 4102LS Long Sleeve, **4102SS** Short Sleeve
55% Cotton, 45% Polyester. Sizes: S - 5XL, Full Cut



SHADOW STRIPE

A subtle classic stripe in two colourways and two sleeve length options. Perfect for everyday office wear.

Womens: 2104 Short Sleeve, **2144** 3/4 Sleeve
55% Cotton, 45% Polyester. Sizes: 6 - 30, Semi-Fitted

Mens: 4104LS Long Sleeve, **4104SS** Short Sleeve
55% Cotton, 45% Polyester. Sizes: S - 5XL, Classic Fit





TOPS & SHIRTS
LOOK GOOD
feel great

With designs that people want to wear, made from innovative fabrics and professional manufacturing, our tops and shirts range are of superior quality that meet the demands of today's work environments.

Left: 2211 Long Sleeve
Right: 4200 Long Sleeve



PIPPA KNIT

Exceptionally soft and cool to wear, the Pippa Knit has a unique and versatile draped neckline with gathered front details. It creates a feminine look that is flattering to everyone.



2221 3/4 Sleeve, **2222** Short Sleeve
Polyester Matte Jersey.
Sizes: XXS - 4X. Semi-Fitted



DARK LILAC	WHITE	BLACK
KELLY GREEN	AQUA	RED
COBALT	NAVY	JADE
GRAPE	CHARCOAL	

New Kelly Green in Recycled Polyester Matte Jersey.



New colour!

*Dress up
or down*

CITY OVERKNIT

The cardigan is a versatile essential knit that complements all other styles in our collection. Made from Australian Merino Wool blend and is a low-pill yarn.

*Low-pill
yarn*



2225 Long Sleeve
50% Australian Merino Wool,
50% Acrylic
Sizes: XXS - 4X,
Semi-Fitted

NAVY

BLACK

Also featured:
2147 Long Sleeve
Breathable Polyester
Sizes: 6-30, Action Fit

*New
style!*

PETAL PRINT

Upgrade your uniform with this luxurious jersey fabric knit style top. With a print that won't date, Petal Print comes in three colour options. A versatile style that fits into healthcare with many different bottom options or alternatively in a corporate setting. Easy to wear and care for.

*Easy to
wear*



2277 Short Sleeve
Recycled Polyester/
Polyester, 5% Spandex
Sizes: XXS-5X, Semi-Fitted

NAVY/WHITE

NAVY/BLEU

BLACK/WHITE

GRACE

Elegant and graceful, featuring cross over sides, centre front stitched pleat and slinky inner knit - designed for amazing comfort.



2287 Short Sleeve
Outer - Polyester Luxury Crepe
Inner Knit - Polyester/Spandex
Sizes: 6 - 26, Semi-Fitted



PEWTER

NAVY

ROYAL

BLACK

Longer line design



BELLA

A universal favourite for the hospitality industry with the contrast fabric and designer placket. This newly created style is elegant, smart and timeless. Also a versatile option for corporate industries.

New style!



2275 3/4 Sleeve
2276 Short Sleeve
Polyester Matte Jersey
Sizes: XXS - 4X, Semi-Fitted



ELLA

A smart polo when you are not wearing a polo! Essential every day classic that suits any industry and teams well with a structured bottom to dress up or paired back with the R Jeans for a more casual look. Made from our popular matte jersey fabric, this style features an open collar, front placket.

New style!



2273 3/4 Sleeve, **2274** Short Sleeve
Polyester Matte Jersey
Sizes: XXS - 4X, Semi-Fitted



NAVY	CHARCOAL
ROYAL	BLACK



*Casual
comfort*



MEGHAN

Simple and relaxed. Styled in a cool crepe fabric with a beautifully shaped hemline and inverted action back for movement. Features a concealed button placket and is further enhanced by a ¾ sleeve roll up option.



2211 Long Sleeve Polyester. Sizes: 6 - 26, Action Fit

ROYAL	NAVY
BLACK	



EZYLIN® MEGHAN

We've taken the Meghan relaxed fit design and made it with our white Ezylin® fabrication - so it's still soft and elegant and has no show through. The long sleeves have a roll-up option to become a ¾.

New Maternity Style



2147 Long Sleeve, Breathable Polyester Sizes: 6 - 30, Action Fit

2148 Maternity Long Sleeve Breathable Polyester Sizes: S - 1X, Action Fit

WHITE

SOPHIA

Redefined sophistication with natural stretch, featuring a ¾ sleeve with a roll-up option. Sophia features front pintuck details for a flattering line. Made from So Ezy fabric, it is lightweight and easy to care for.

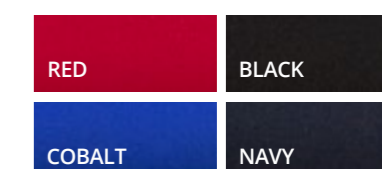
*Ideal for
day or night*



*Front pintuck
matches the
City Stretch® Spot*



2215 3/4 Sleeve
So Ezy Polyester
with Natural Stretch
Sizes: 6 - 30, Semi-Fitted



ENVY

Elegant, relaxed fit shirt with pleated front concealed buttons and action back capturing today's corporate trends. Cool to wear and ideal for busy professionals.



2288 Short Sleeve
Polyester
Sizes: 6 - 26, Semi-Fitted

ROYAL

NAVY

BLACK



*Relaxed
fit*

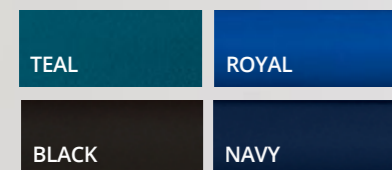
KEYHOLE KNIT

Enhanced by the elegant keyhole and pleat neckline, this top is made in a luxurious textured crepe that feels so silky against your skin.

*Fabric that
moves with you*



2295 Short Sleeve.
95% Polyester, 5% Spandex.
Sizes: XXS - 4X, Semi-Fitted

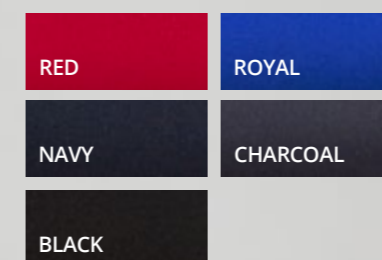


KNIT WOVEN

A unique combination of flattering woven So Ezy front with v-neckline detail and a knit back for ultimate comfort and versatile movement.



2299 Short Sleeve
Front - So Ezy Polyester
Back - 94% Polyester, 6% Elastine
Sizes: 6 - 26, Semi-Fitted



*Modern
V-neck*

Available in
3 sleeve lengths



Trans-seasonal

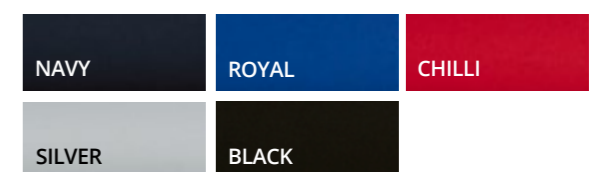


SMART KNIT

Practical everyday classic. An essential, trans-seasonal versatile knit featuring a smart scooped neckline and 3 sleeve option.



2290 3/4 Sleeve, **2291** Short Sleeve, **2292** Sleeveless
Polyester Matte Jersey. Sizes: XXS - 4X, Semi-Fitted

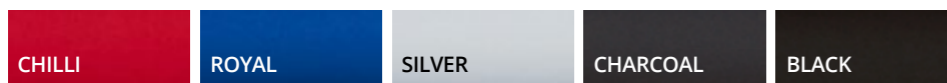


EVA KNIT

Elegant and versatile, the Eva Knit features a cowl neck that eliminates gaping when you lean forward. This soft yet durable knit is designed to shape and flatter your figure.



2226 3/4 Sleeve, **2227** Short Sleeve, Polyester Matte Jersey
Sizes: XXS - 4X, Semi-Fitted



CASCADE

Cleverly combining a silky inner knit cami and woven fabric to bring ultimate comfort and fit. Complemented by a smart cascading vertical pleat in a soft round neckline.



2285 Short Sleeve Outer (woven) - Polyester Inner (knit) - 95% Polyester, 5% Spandex Sizes: 6 - 26, Semi-Fitted



Inner lining is a stretch knit

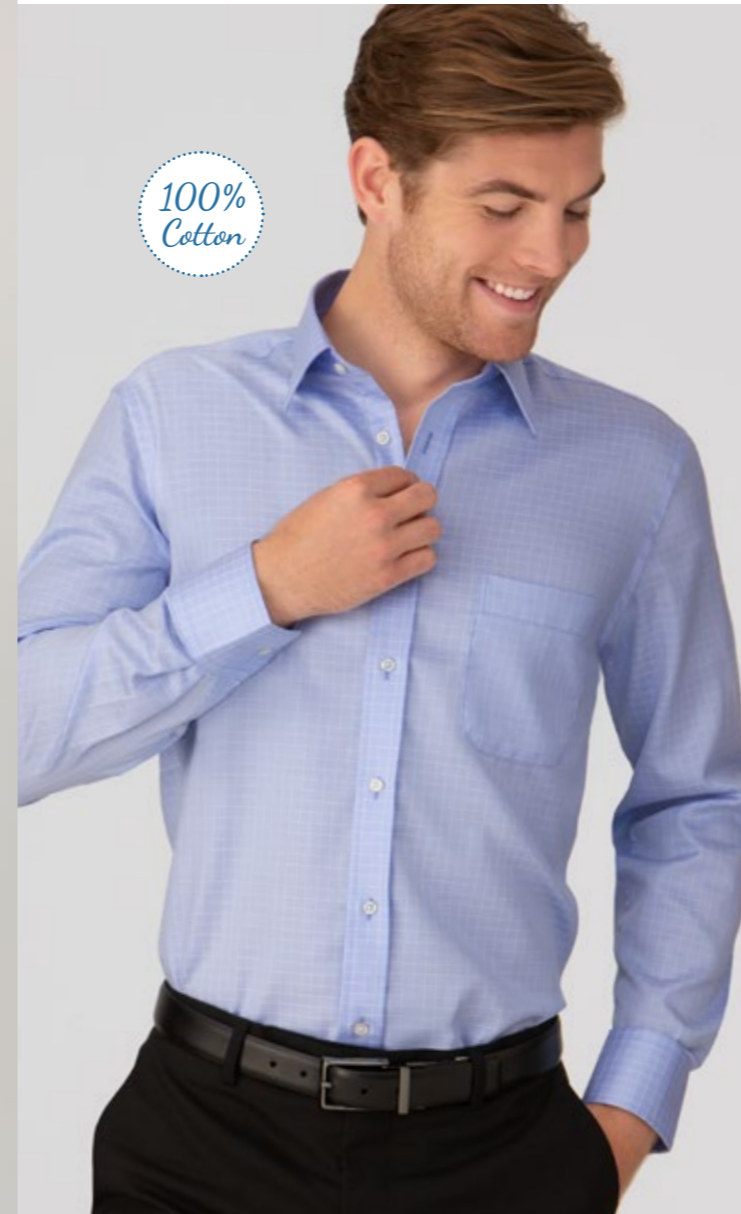
MICRO CHECK

4102LS Long Sleeve
4102SS Short Sleeve
55% Cotton, 45% Polyester
Sizes: S - 5XL, Full Cut



From management to healthcare to hospitality, our mens' shirts are versatile across all industries.

100%
Cotton



CAPRI CHECK

4111 Long Sleeve
100% Superfine Cotton
Sizes: 38 - 52, Tailored Fit



SHADOW CHECK

4182 Long Sleeve
55% Cotton, 45% Polyester
Sizes: S - 5XL, Slim Fit



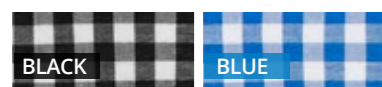
Offering a range of smart, casual shirts or a button down option.

We understand that your uniform needs to withstand the rigours of daily wear, which is why we use only high-quality materials. Our shirts are made to last and maintain form ensuring your team always looks their best.



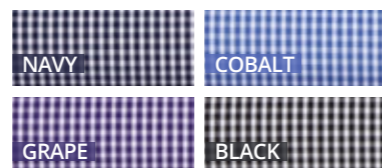
GINGHAM CITY CHECK

Mens 4207 Long Sleeve
100% Cotton with Natural Stretch. Sizes: S - 5XL, Slim Fit



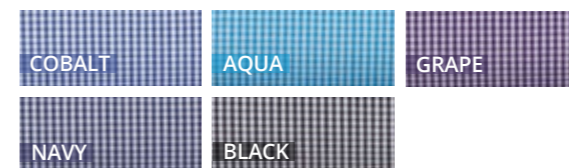
SO EZY CHECK

4263 Long Sleeve
60% Cotton, 40% Polyester. Sizes: S - 5XL, Slim Fit



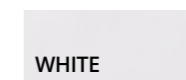
PIPPA CHECK

4222 Long Sleeve
60% Cotton, 40% Polyester. Sizes: S - 5XL, City Fit



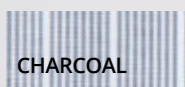
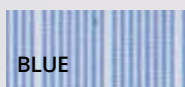
TWILL SHIRT

4200 Long Sleeve
60% Cotton, 40% Polyester. Sizes S - 5XL, City Fit



SHADOW STRIPE

4104LS Long Sleeve
4104SS Short Sleeve
55% Cotton, 45% Polyester
Sizes: S - 5XL, Classic Fit



Shirts that integrate seamlessly with any uniform range.

100% Cotton



XPRESSO

4257 Long Sleeve.
100% Cotton with Natural Stretch Sizes: S - 5XL, Slim Fit



PINFEATHER

Mens: 4265 Long Sleeve
60% Polyester, 40% Cotton. Sizes: S - 5XL, City Fit



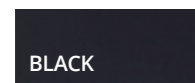
Different businesses have different requirements. We understand.

A mix of smart, casual and tailored shirts for men in premium fabrics. Our shirt range offers colours, stripes, and checks – styles that can be worn to mix and match and co-ordinate back with womens, for a uniform in any work environment.



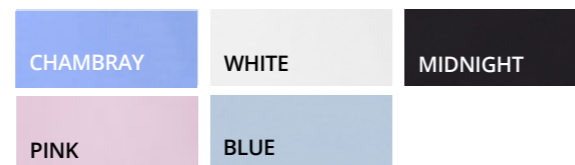
OLIVER

4773 Long Sleeve. 65% Cotton, 30% Polyester, 5% Spandex. Sizes: S-5XL, Slim Fit



COTTON COMFORT

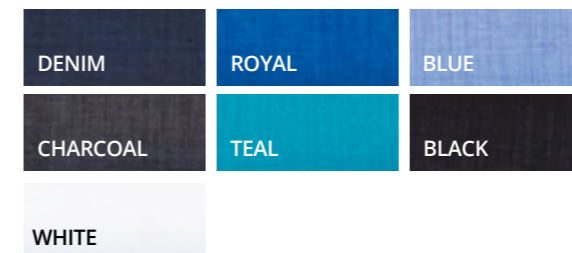
MSH80 Long Sleeve. Polyester/Cotton
Sizes: S-5XL, Slim Fit



Pink and Chambray available upon request.

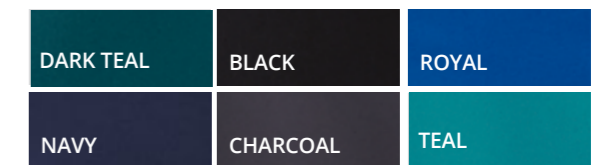
EZYLIN®

4145 Short Sleeve. Breathable Recycled Polyester (except white, Breathable Polyester), Sizes: S - 5XL, Sports Fit



CITY ACTIVE TOP

CA4T Short Sleeve. Recycled Polyester, 5% Spandex Anti-Bacterial. Sizes: XXS-5X, Sports Fit





SUITING SEPARATES

for style & function

Our suits are a smart business investment. Mix shirt/top separates to create a sharp look or match a suit jacket that will take you through the working week.

Left: 2287 Short Sleeve, **FSK45-4060** Skirt
Right: 4200 Long Sleeve, **MSC2-4060** Jacket
& **MTRO-4060** Trousers



Fully lined jacket

Whether you're in the office or out on the town, the Dianna jacket is available in two fabrics and is tailored for a perfect fit.



Dianna

FJK35-992
Sorbtek® Polyester
Sizes: 6 - 26
Colours: Black & Navy

FJK35-4060
60% Polyester, 40% Wool
Sizes: 6 - 26
Colours: Black, Navy & Charcoal

Samantha

FPA22-992
Classic pant flexi waist
Sorbtek® Polyester
Sizes: 6-26
Colours: Black & Navy

FPA22-4060
Ladies flexi waist Classic pant
60% Polyester, 40% Wool
Sizes 6-26
Colours: Black, Navy & Charcoal



Chloe

FPA36-992
7/8 pant flexi waist
Sorbtek® Polyester
Sizes: 6-26
Colours: Black & Navy

Miranda

FPA40-992
Pant with exposed elastic back waist
Sorbtek® Polyester
Sizes: 6-26
Colours: Black, Navy



Gracie

FPA41-992
Slim leg pant
Sorbtek® Polyester
Sizes: 6-24
Black & Navy

FPA41-4060
Slim leg pant
60% Polyester, 40% Wool
Sizes: 6-24
Colours: Black, Navy & Charcoal

Available colours for **Sorbtek® Polyester**



Available colours for **60% Polyester, 40% Wool**



Classic silhouette

Our corporate suiting skirt is designed with a classic silhouette, available in knee length, is flattering on any body shape.



2277 Petal Print Short Sleeve
Recycled Polyester/Polyester,
5% Spandex
Sizes: XXS-5X, Semi-Fitted
Colours: Black/White,
Navy/White and Navy/Blue

FSK45-992 Maddi Skirt
Knee length skirt
Sorbtek® Polyester
Sizes 6-26
Colours: Black & Navy



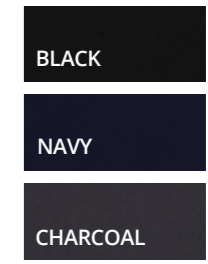
Natasha

FPA38-992
Flexi waist short
Sorbtek® Polyester
Sizes: 6-26
Black & Navy



So Ezy

CA3P
Straight leg pant with
angled side pockets
Recycled Polyester,
5% Spandex
Anti-bacterial
Active fit
Sizes: XXS-3X
Black, Navy & Charcoal



Charlotte

FSK43-896
Classic skort
Polyester/Rayon
Sizes: 6-26
Black & Navy



Maddi

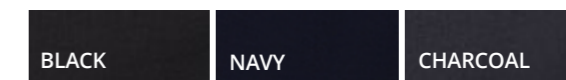
FSK45-992
Knee length
front pocket skirt
Sorbtek® Polyester
Sizes: 6-26
Black & Navy

FSK45-4060
60% Polyester, 40% Wool
Ladies knee length
front pocket skirt
Sizes: 6-26
Black, Navy & Charcoal

Available colours for
Sorbtek® Polyester



Available colours for
60% Polyester, 40% Wool





Charles

MSC2-4060
 2-Button Jacket
 60% Polyester, 40% Wool
 Sizes: 82R-132R
 Black, Navy & Charcoal

Will

MTRO-4060
 Flexi Waist Trousers
 60% Polyester, 40% Wool
 Sizes: 77R-107R, 87S-132S
 Black, Navy & Charcoal

BLACK

CHARCOAL

NAVY

A classic fit

Our latest release stands out from other suiting options available in the market.



Will

MTRO-4060
 Flexi Waist Trousers
 60% Polyester, 40% Wool
 Sizes: 77R-107R, 87S-132S
 Black, Navy & Charcoal

BLACK

NAVY

CHARCOAL

Harry

MTRO-690
 Flexi Waist Trousers
 80% Polyester, 20% Viscose
 Sizes: 77R-107R, 87S-132S
 Black & Navy

BLACK

NAVY



FOR ALLIED HEALTH TEAMS

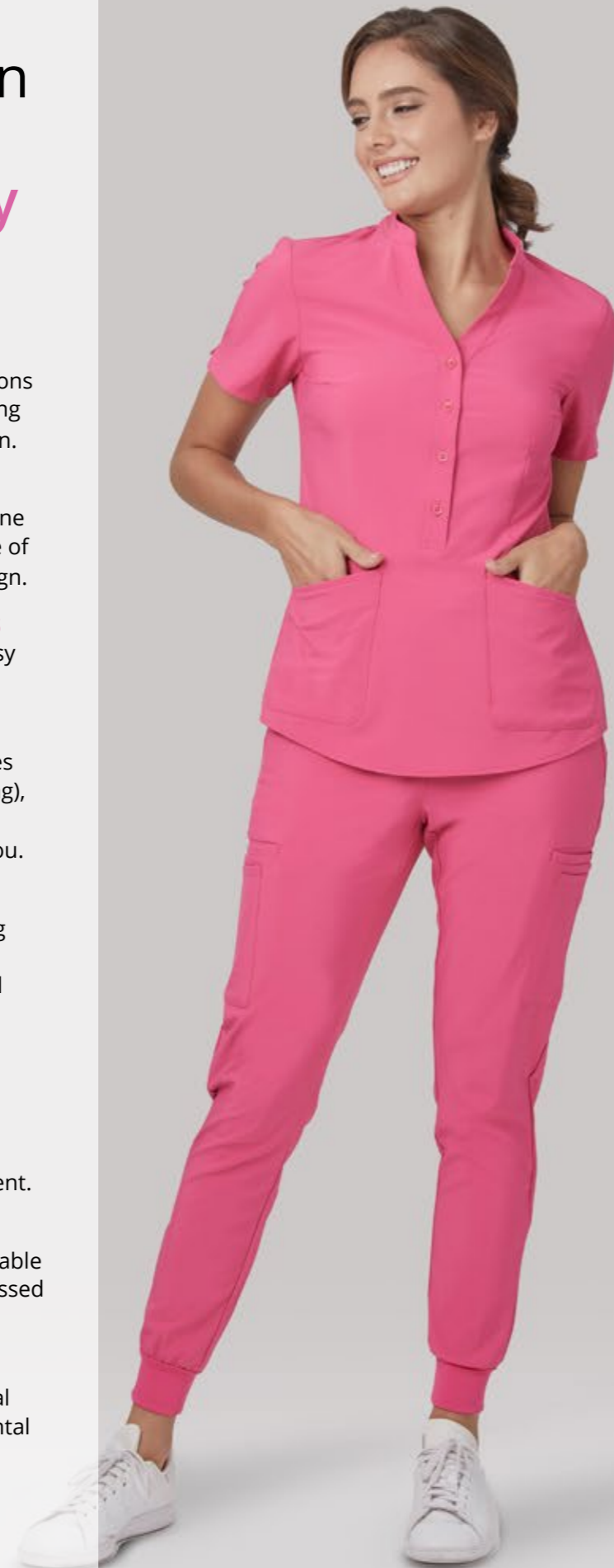
*easy care
& easy wear*

Offering the most popular colour palettes that complement most brand identities and offer a large range of co-ordinate patterns and fabrics for added diversity.



The City Collection healthcare range targets 8 industry requirements:

- ✓ **Function and Recognition**
Garments reflect the roles and functions of staff and each style projects a strong sense of identification and recognition.
- ✓ **A Colour Story**
Promote a unified team look within one colour palette whilst enjoying a sense of individuality within the style and design.
- ✓ **Easy Care & Breathable Fabrics**
Garments that are easy to wear & easy to care for.
- ✓ **Comfort & Practicality**
With the physical nature of many roles (bending, lifting, reaching, and twisting), fabrics, styles and sizes must create comfortable attire that moves with you.
- ✓ **Durability & Presentation**
Hard-wearing fabrics with long lasting quality to ensure that garments have longevity and maintain a professional appearance all day, everyday.
- ✓ **A Range of Designs and Sizes**
From the design, style and cut of the shirts, consideration has been made for your body width and height to accommodate your range of movement.
- ✓ **Quick Delivery**
With every style, size and colour available on stock service, every order is processed and delivered promptly.
- ✓ **Sustainability**
Recycled fabrics produced with ethical production practices and environmental sustainability benefits.



2284 Zip Back Tunic with CA7P Jogger



2174 City Stretch® Spot Tunic with CA3P So Ezy Pant



CA4T City Active Top with CA4P City Active Pant

New styles



Say it with prints

Strong patterns enhance staff identification and sense of unity. A strong pattern helps clients identify your team quickly.



Drift Print

2192: Short Sleeve
Recycled Polyester, 5% Spandex Anti-Bacterial.
Sizes: 6 - 30. Action Fit. Colours: Teal, Blue & Navy



City Stretch® Spot

2172: 3/4 Sleeve, **2173:** Short Sleeve
Recycled Polyester/Polyester with Natural Stretch
Sizes: 6 - 30, Semi-Fitted



Heart Print Tunic

2281: Short Sleeve
Recycled Polyester, 5% Spandex Anti-Bacterial.
Sizes: 6 - 30 Semi-Fitted. Colours: Blue



Petal Print

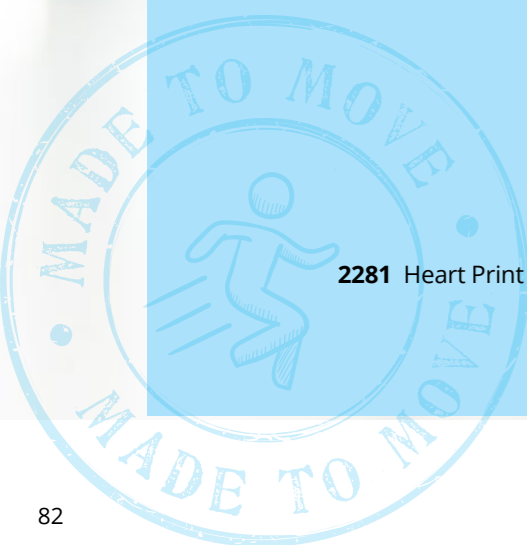
2277: Short Sleeve
Recycled Polyester/Polyester, 5% Spandex. Sizes: XXS-5X
Semi-Fitted. Colours: Navy/Blue, Navy/White & Black/White

Recycled

4-Way Stretch Range

Breathable fabric made from Recycled Polyester and 5% Spandex with cool touch and anti-bacterial 4-Way Stretch.

- ✓ Natural stretch that moves with you
- ✓ Non iron, so it's always ready to wear
- ✓ Quick drying, making it perfect for everyday wear
- ✓ Light & durable, comfortable and long lasting
- ✓ Cool to wear, made with breathable fabric ideal for the active role

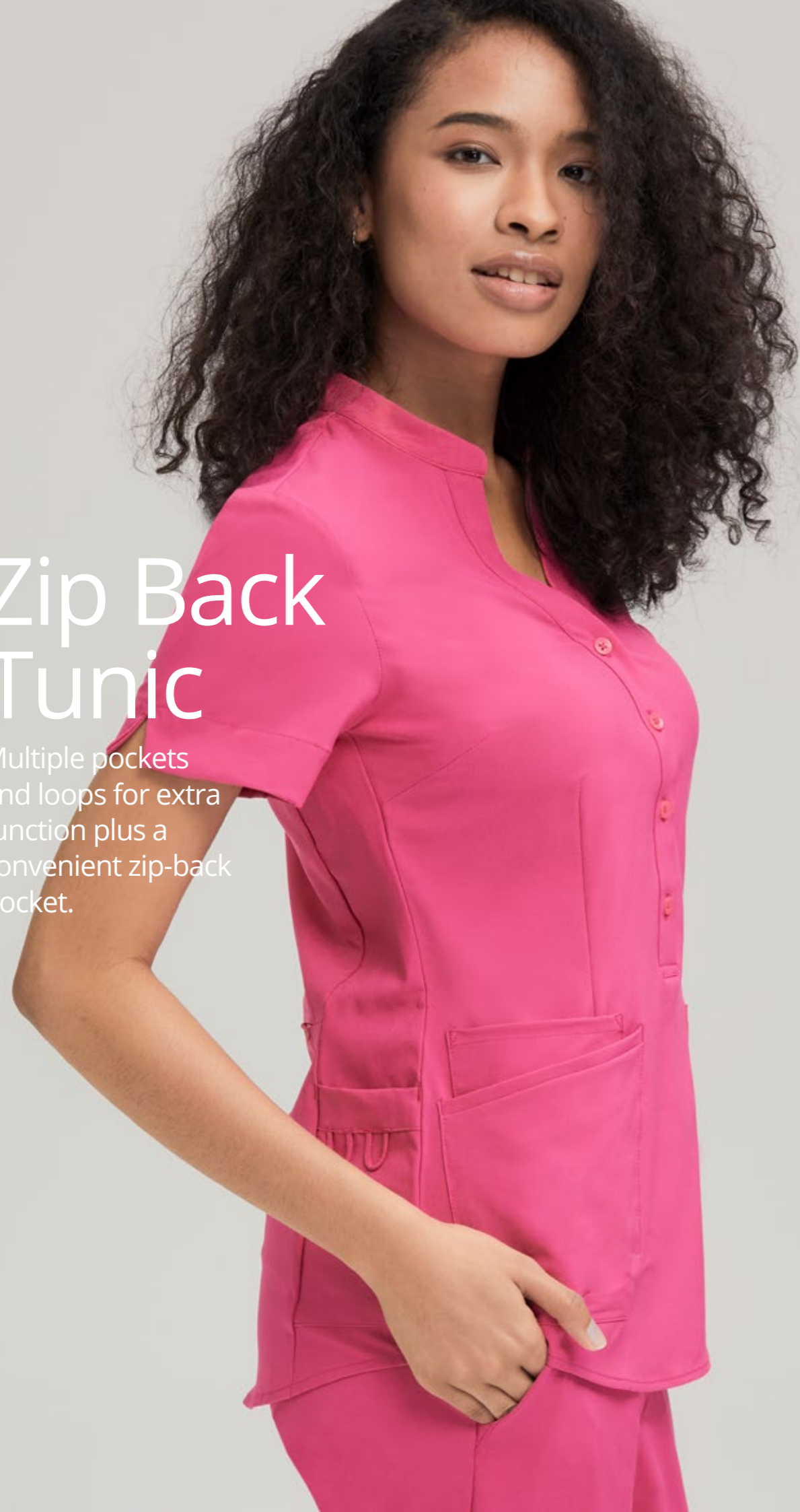


2281 Heart Print Tunic



Zip Back Tunic

Multiple pockets and loops for extra function plus a convenient zip-back pocket.



2284 Short Sleeve. Recycled Polyester, 5% Spandex Anti-Bacterial. Sizes: 6-26, Semi-Fitted



New style!

Chrissy

A unique design featuring a hidden side pocket. Suitable for front of desk to management, meetings or events. Chrissy is soft, cool to wear and incredibly versatile.

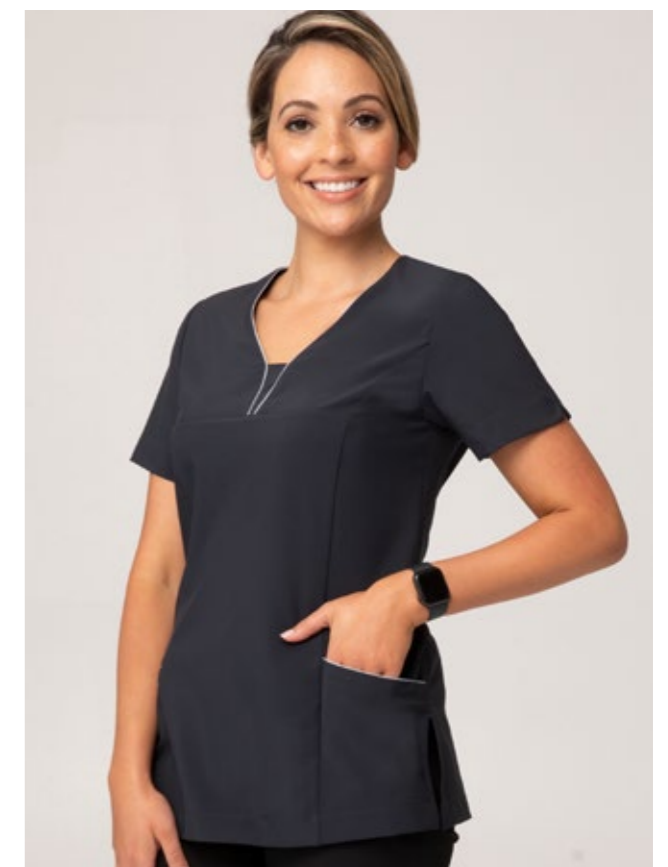
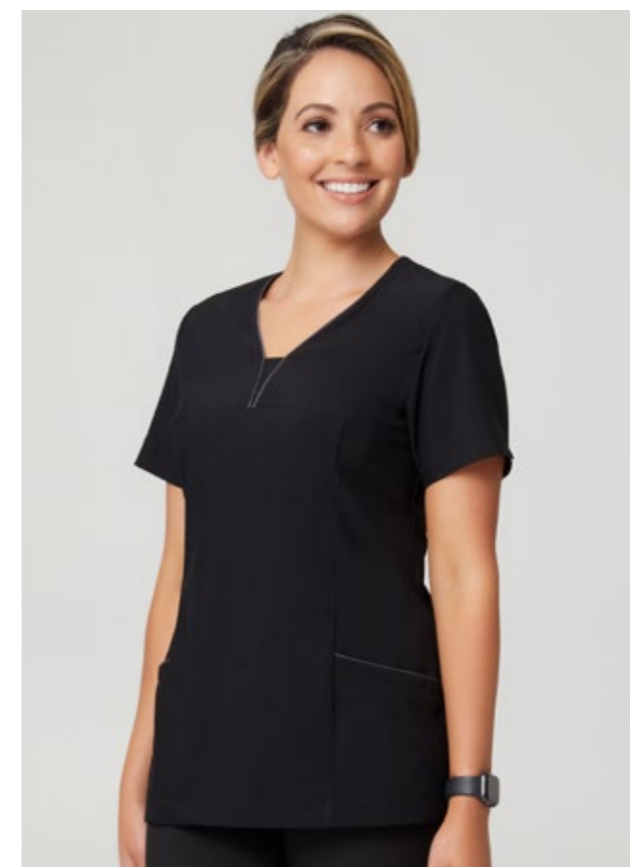
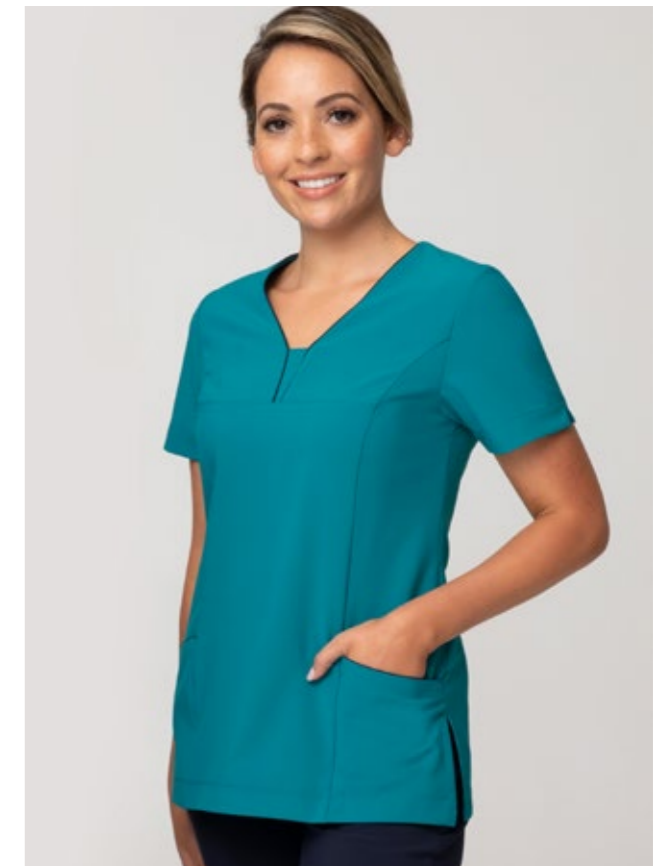


2283 Drop Shoulder Sleeve. Recycled Polyester, 5% Spandex Anti-Bacterial. Sizes: XXS-4X, Action Fit



4-Way Stretch Tunic

Fine piped modest neckline, multiple pockets and equipped with an airflow action back with generous side splits.



2280 Short Sleeve. Recycled Polyester, 5% Spandex Anti-Bacterial. Sizes: 6-30, Semi-Fitted



Available in maternity option!

City Active 2 Top

An active scrub in a 4-Way Stretch easy care fabric, with anti-bacterial protection and multi functional pockets.

Knit stretch side panels

- ✓ 2 Pockets, left side
- ✓ 3 Pockets, right side
- ✓ Knit stretch side panels
- ✓ Contrast or plain colour option
- ✓ Hem split

2 pockets left side



3 pockets right side



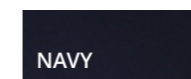
Shaped Hem



CA2T: Top
 Body: 95% Polyester, 5% Spandex
 Side Panel: Polyester
 Sizes: XXS - 3X, Semi-Fitted



CA2P: Pant
 Pant: 95% Polyester, 5% Spandex
 Inner Pocket: Polyester
 Sizes: XXS - 5X, Semi-Fitted



Womens' Jogger

Made from Recycled Polyester, this lightweight Jogger is supremely functional with ten pockets and with fabric that moves with you.



Womens: CA7P Jogger
Recycled Polyester, 5% Spandex Anti-Bacterial
Sizes: XXS - 3X, Active Fit

NAVY

BLACK

PINK



2 x hidden zip pocket (left & right)

Yoga inspired waistband
360° drawstring

2 x deep pockets (left & right)

2 x welt pockets (left & right)

2 x deep side pockets (left & right)

Tapered cut

2 back pockets

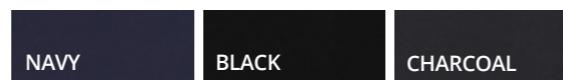
Stretch cuff

City Active 2 Pant

Functional all-purpose bottoms. Featuring an elastic waist with drawstring and multiple pockets that are functional.



Womens: CA2P
 Pants - Recycled Polyester, 5% Spandex Anti-Bacterial
 Inner Pocket - Polyester Anti-Bacterial.
 Sizes: XXS-5X, Semi-Fitted

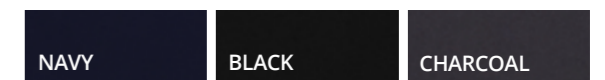


So Ezy Pant

Made to move with you, the So Ezy pant is extremely comfortable, quick drying and breathable. Soft yoga inspired waistband.



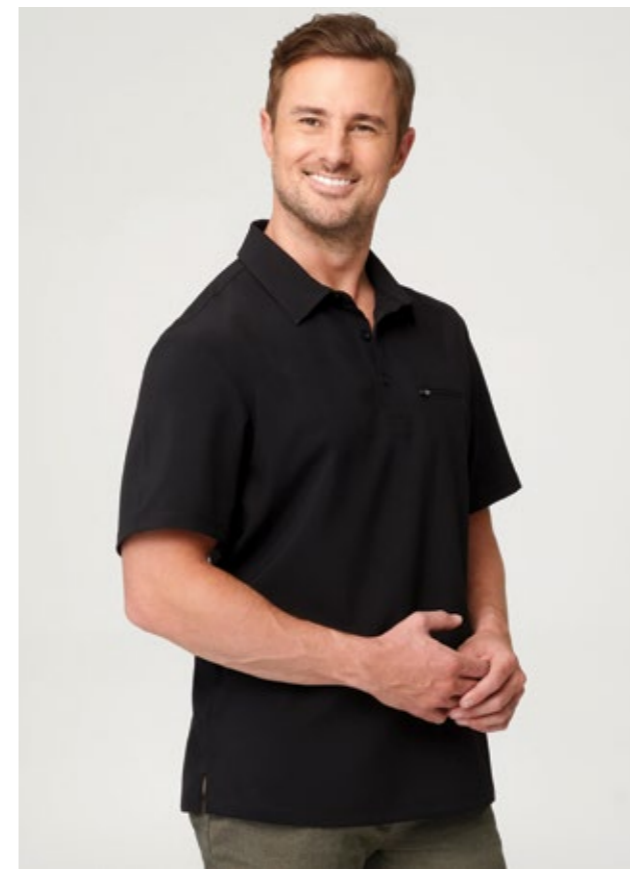
Womens: CA3P
 Recycled Polyester, 5% Spandex Anti-Bacterial
 Sizes: XXS-3X, Active Fit





City Active Top

Carefully designed collar and hemline, side split and a discreet chest pocket with zip.



CA4T Short Sleeve. Recycled Polyester, 5% Spandex Anti-Bacterial. Sizes: XXS-5XL, Sports Fit.



City Active Pant

The City Active Pant is made with anti-bacterial protection and features multiple pockets, a full internal drawstring waistband and key loops making this pant so functional to wear.



Mens CA4P City Active Pant
95% Recycled Polyester/Polyester,
5% Spandex, Anti-Bacterial
Sizes: XXS-5XL , Active Fit

CHARCOAL

TEAL

NAVY

BLACK

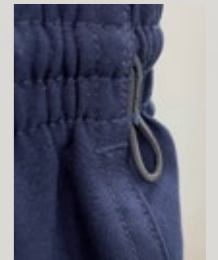


Full elastic waist
360° drawstring

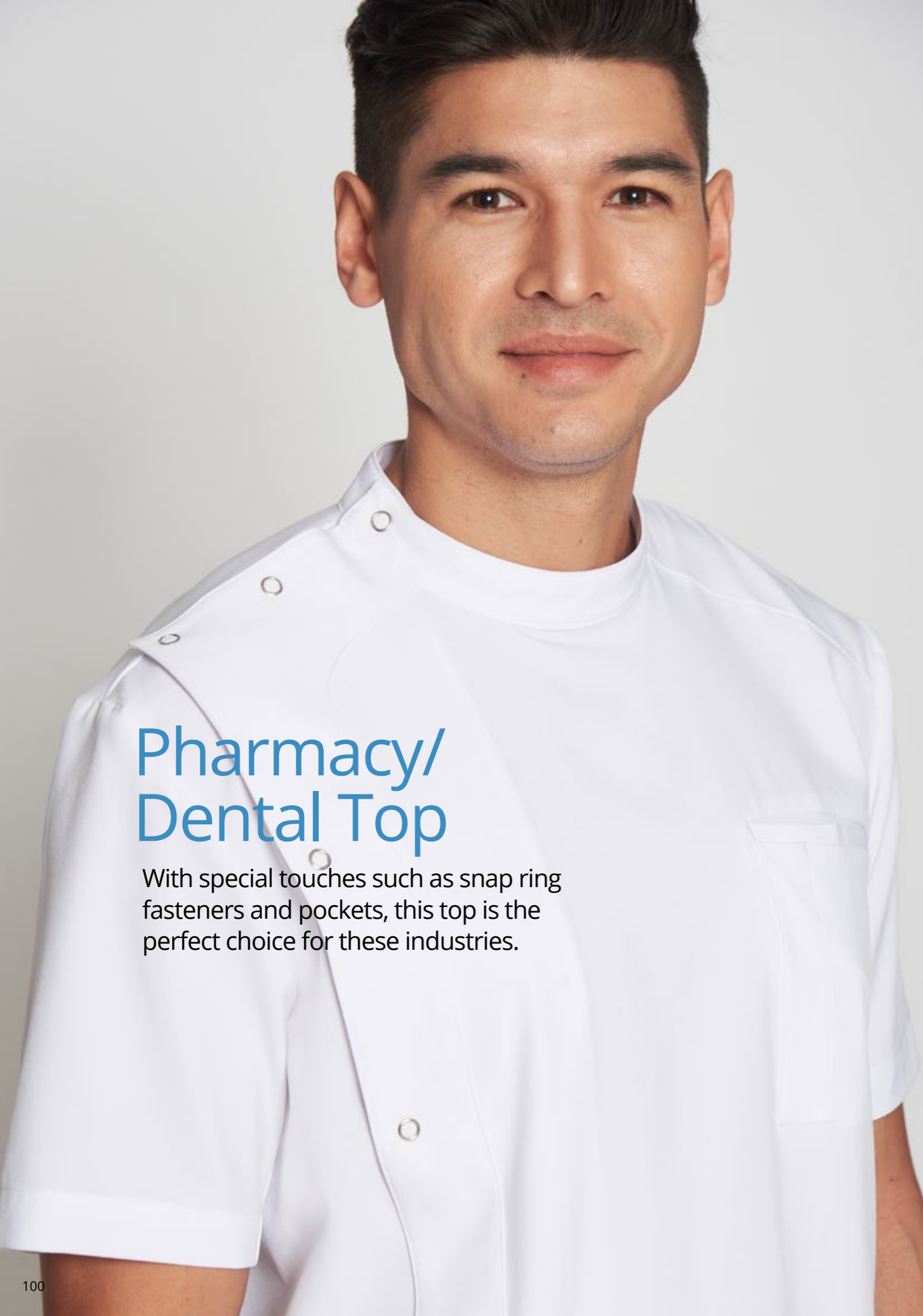
Angled front
pockets
(right & left)

Side leg pockets
(right side)

Deep
side pocket



Key loop
(left side)



Pharmacy/ Dental Top

With special touches such as snap ring fasteners and pockets, this top is the perfect choice for these industries.

New style!



Mens: CA44T Short Sleeve
Recycled Polyester,
5% Spandex Anti-Bacterial
Sizes: S-2XL, Tailored Fit

Features

- Band collar
- Top and lower pocket
- Snap ring fasteners

WHITE

Womens: CA22T Short Sleeve
Recycled Polyester,
5% Spandex Anti-Bacterial
Sizes: 6 - 22, Semi-Fitted

Features

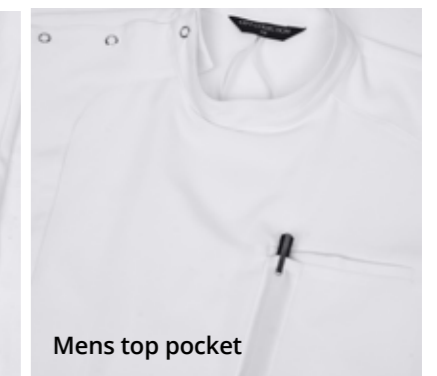
- Mandarin collar
- Double front pockets
- Snap ring fasteners

WHITE

BLACK



Womens front pockets



Mens top pocket

Ezylin® is fabricated *in Recycled Polyester*

Ezylin® is a soft yet durable fabric that is machine washable for everyday wear. It features an easy care finish with minimal or no ironing required. Ezylin® styles are part of the co-ordinate range.

- ✓ The perfect fabric for all work environments
- ✓ A unique finish that keeps you cool, dry and comfortable
- ✓ 100% Breathable fabric made from recycled polyester
- ✓ Ezylin® shirts are designed for versatile pairing meaning it fits perfectly within our co-ordinate range
- ✓ Designed to fit all body shapes and sizes

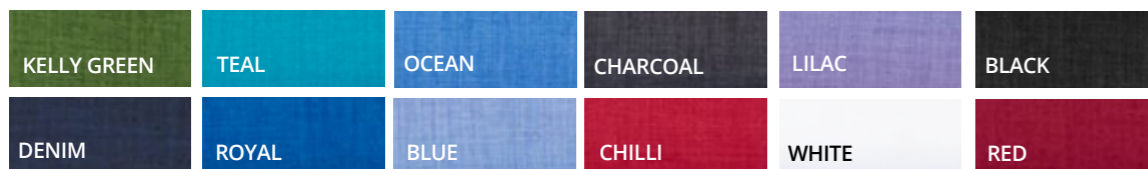


Ezylin® plain style shirts and tunics can be ordered and custom made in any of the 12 colours available!

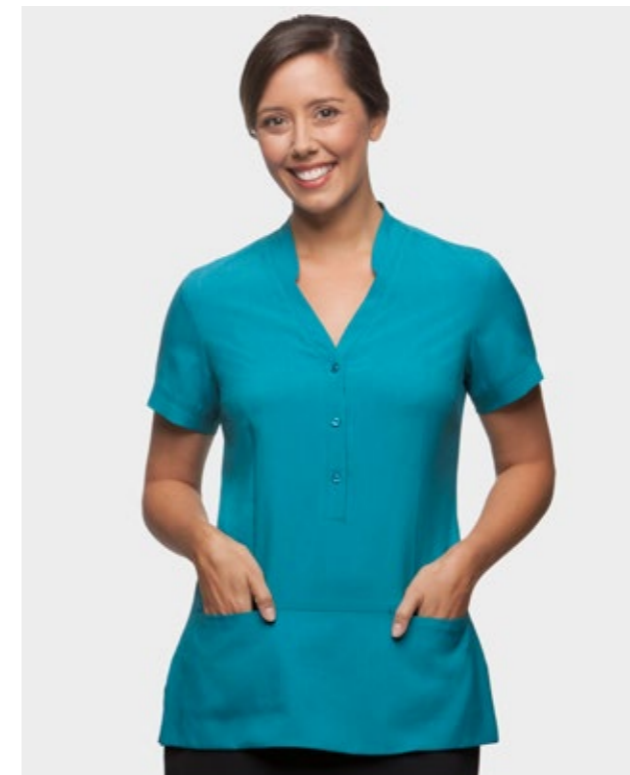
New colour!



2145 3/4 Sleeve, **2146** Short Sleeve. Breathable Polyester. Sizes: 6 - 30, Semi-Fitted. Ranged in all colours.

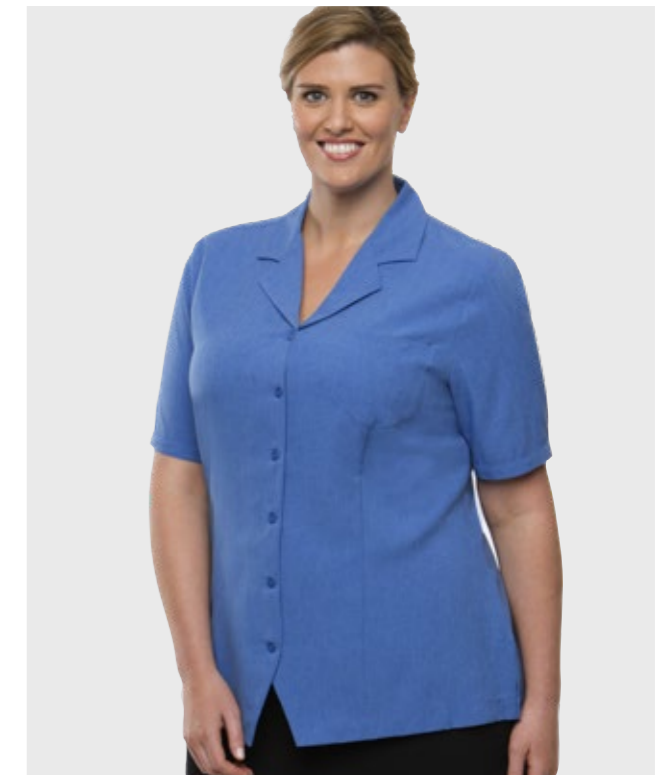


New Kelly Green in Recycled Polyester.



Ezylin® Tunic

2151 Short Sleeve
Breathable Polyester. Sizes: 6-30, Action Fit
Ranged in Royal & Teal



Ezylin® Tunic Overblouse

2149 Short Sleeve
Breathable Polyester. Sizes: 6-30, Action Fit
Ranged in Royal, Ocean, Teal & Red



Ezylin®

4145 Short Sleeve. Breathable Polyester
Sizes: S - 5XL, Sports Fit.
Ranged in Charcoal, Denim, Royal, Blue, Teal,
Black & White



Ezylin® Dual Pocket Stripe

2270 Short Sleeve
100% Breathable Polyester
Sizes: 6 - 30. Action Fit. Ranged in Blue



Wash & Wear City Stretch® Spot Range

City Stretch® based fabrics are the perfect fit for everyday wear. A comfortable fabric that moves with you, is cool and airy making it very easy to wear.

- ✓ Natural stretch, recycled polyester
- ✓ Non iron, quick drying
- ✓ Light & durable
- ✓ Cool to wear
- ✓ Breathable



For that modern professional look, this Recycled Polyester fabric with natural stretch offers plenty of movement and comfort.



Side splits

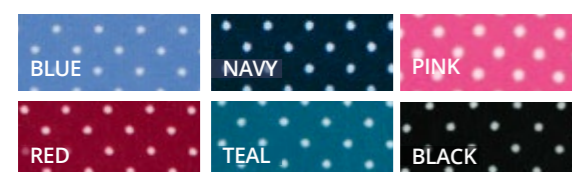


with Wonder Button



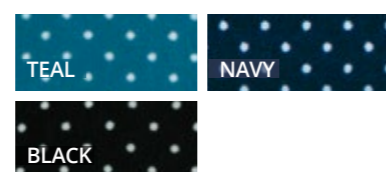
City Stretch® Spot Tunic

2174 Short Sleeve
Recycled Polyester/Polyester with Natural Stretch
Sizes: 6 - 30, Action Fit



City Stretch® Spot Hi-Lo

2175 3/4 Sleeve
Recycled Polyester/ Polyester with Natural Stretch
Sizes: 6 - 30, Action Fit



City Stretch® Spot

Left: 2173 Short Sleeve **Right: 2172** 3/4 Sleeve
Recycled Polyester/Polyester with Natural Stretch
Sizes: 6 - 30, Semi-Fitted

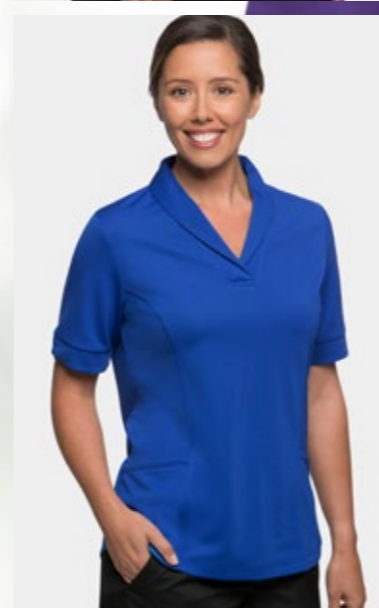
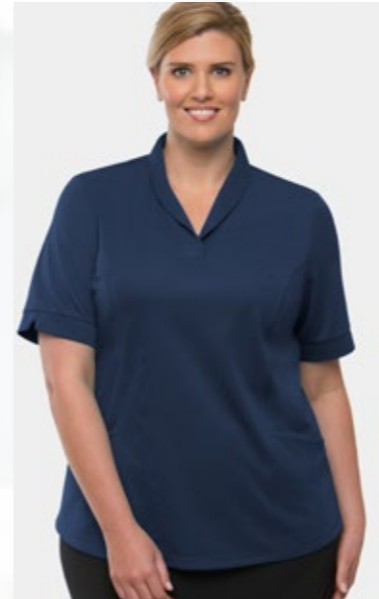
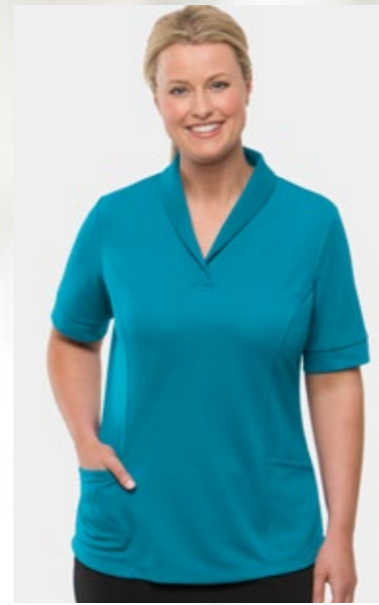


City Health Active *with Hi-Tec technology*

Hi-Tec Technology is a unique anti-microbial and quick drying yarn that contains elements that can move moisture away from your body to the outer layer of fabric. As a result the fabric not only inhibits germs but feels really soft and fresh all the time.

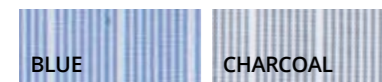
- ✓ Quick absorption & drying, little to no ironing required
- ✓ Anti-bacterial protection, kills germs
- ✓ UV protection
- ✓ Extra durable
- ✓ Removes odour

2230: Short Sleeve
Polyester Hi-Tec Silver Sizes: XXS - 5X, Semi-Fitted
Colours: Teal, Navy, Royal & Lilac

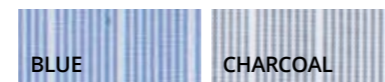


SHADOW STRIPE

Womens: 2104 Short Sleeve, **2144** 3/4 Sleeve
55% Cotton, 45% Polyester

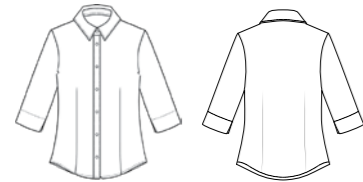


Mens: 4104LS Long Sleeve, **4104SS** Short Sleeve
55% Cotton, 45% Polyester

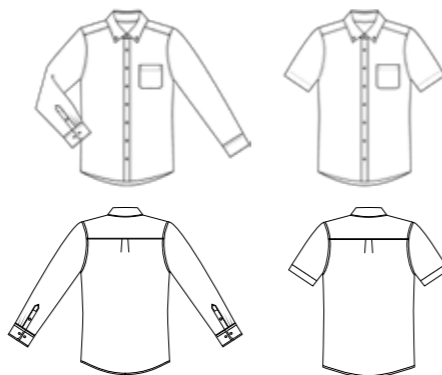


MICRO CHECK

Womens: 2121 3/4 Sleeve
55% Cotton, 45% Polyester



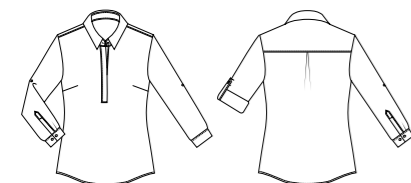
Mens: 4102LS Long Sleeve, **4102SS** Short Sleeve
55% Cotton, 45% Polyester



EZYLIN® MEGHAN



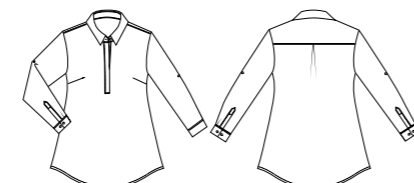
Womens: 2147 Long Sleeve
Breathable Polyester



EZYLIN® MATERNITY TOP



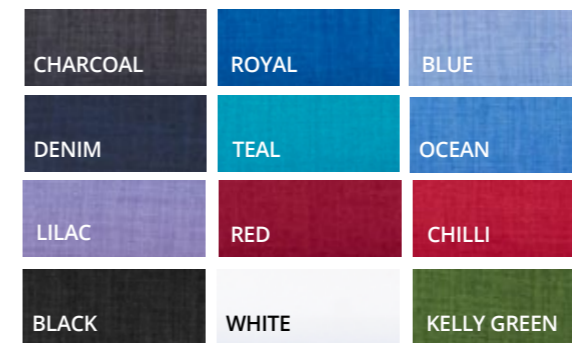
Womens: 2148 Maternity Long Sleeve
Breathable Polyester



EZYLIN®

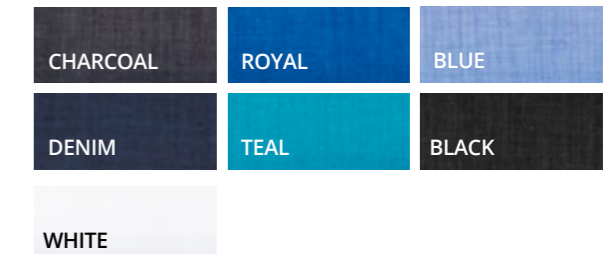


Womens: 2145 3/4 Sleeve, **2146** Short Sleeve
Breathable Polyester



New Kelly Green in Recycled Polyester.

Mens: 4145 Short Sleeve
Breathable Polyester



EZYLIN® OVERBLOUSE



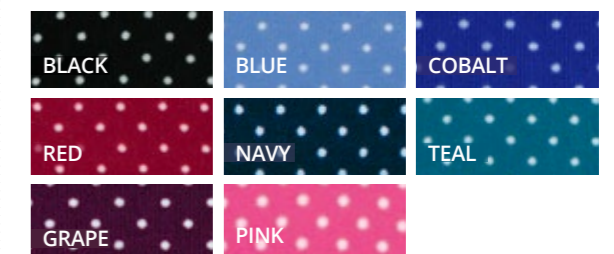
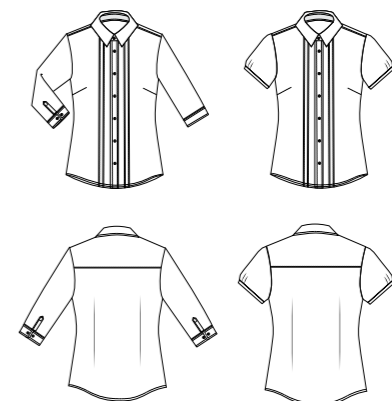
Womens: 2149 Short Sleeve
Breathable Polyester



CITY STRETCH® SPOT



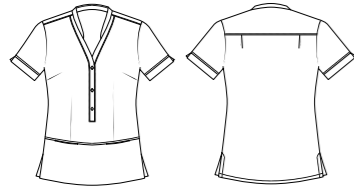
Womens: 2172 3/4 Sleeve, **2173** Short Sleeve
Recycled Polyester / Polyester with Natural Stretch



EZYLIN® TUNIC



Womens: 2151 Short Sleeve
Breathable Polyester



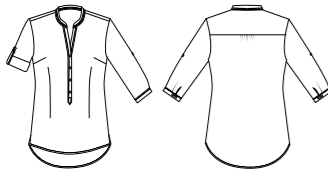
ROYAL

TEAL

CITY STRETCH® SPOT HI-LO



Womens: 2175 3/4 Sleeve
Recycled Polyester / Polyester with Natural Stretch



BLACK

NAVY

TEAL

DRIFT PRINT



Womens: 2192 Short Sleeve
Recycled Polyester, 5% Spandex, Anti-Bacterial



NAVY

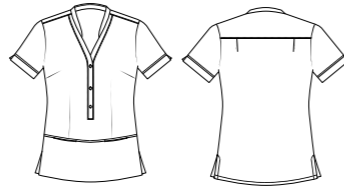
BLUE

TEAL

CITY STRETCH® SPOT TUNIC



Womens: 2174 Short Sleeve
Recycled Polyester / Polyester with Natural Stretch



BLACK

BLUE

NAVY

RED

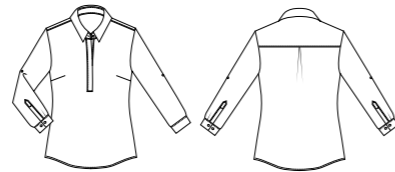
TEAL

PINK

MEGHAN



Womens: 2211 Long Sleeve
Polyester



ROYAL

BLACK

NAVY

PIPPA KNIT



Womens: 2221 3/4 Sleeve, **2222** Short Sleeve
Polyester Matte Jersey



WHITE

CHARCOAL

NAVY

COBALT

AQUA

RED

BLACK

DARK LILAC

JADE

GRAPE

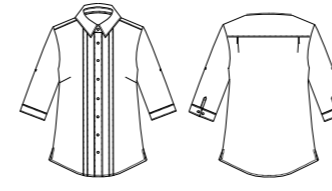
KELLY GREEN

New Kelly Green in Recycled Polyester Matte Jersey.

SOPHIA



Womens: 2215 3/4 Sleeve
So Ezy Polyester with Natural Stretch



BLACK

RED

COBALT

NAVY

EVA KNIT



Womens: 2226 3/4 Sleeve, **2227** Short Sleeve
Polyester Matte Jersey



CHARCOAL

BLACK

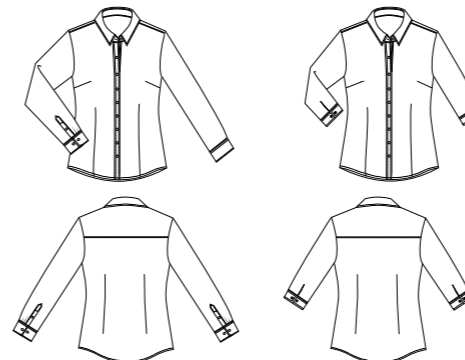
CHILLI

SILVER

ROYAL

XPRESSO

Womens: 2257 Long Sleeve, **2258** 3/4 Sleeve
100% Cotton With Natural Stretch



BLACK

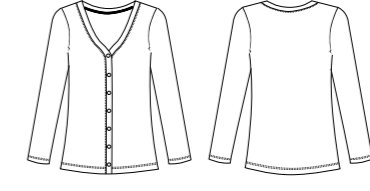
NAVY

2258 Navy available upon request

CITY OVERKNIT



Womens: 2225 Long Sleeve
50% Australian Merino Wool, 50% Acrylic



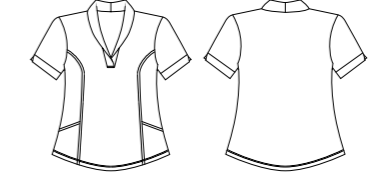
NAVY

BLACK

CITY HEALTH ACTIVE



Womens: 2230 Short Sleeve
Polyester, Hi-Tec Silver Anti-Bacterial



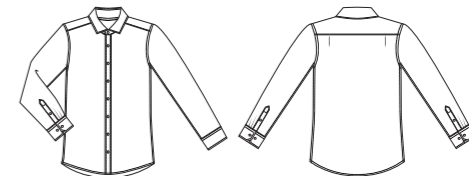
ROYAL

NAVY

TEAL

LILAC

Mens: 4257 Long Sleeve
100% Cotton with Natural Stretch



BLACK

NAVY

CITY STRETCH® CLASSIC

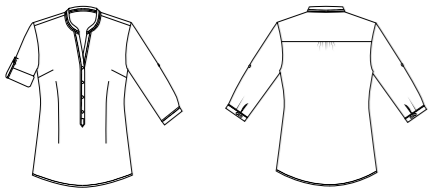
Womens 2260 Long Sleeve, **2261** 3/4 Sleeve, **2262** Short Sleeve
45% Cotton, 37% Polyester, 16% CEO, 2% Lycra



WHITE

SO EZY

Womens: 2263 3/4 Sleeve
Polyester with Natural Stretch



COBALT

CHARCOAL

TEAL

NAVY

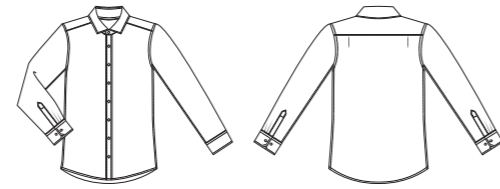
RED

GRAPE

SILVER

BLACK

Mens: 4263 Long Sleeve
60% Cotton, 40% Polyester



NAVY

COBALT

GRAPE

BLACK

PINFEATHER

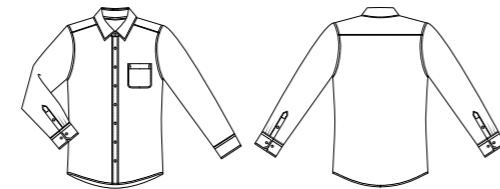
Womens: 2264 Long Sleeve, **2265** 3/4 Sleeve, **2267** Short Sleeve. 57% Polyester, 38% Cotton, 5% Lycra



BLUE

CHARCOAL

Mens: 4265 Long Sleeve
60% Polyester, 40% Cotton

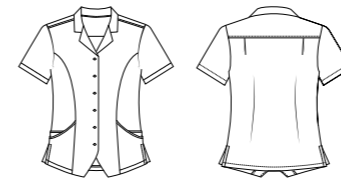


BLUE

CHARCOAL

EZYLIN® DUAL POCKET STRIPE

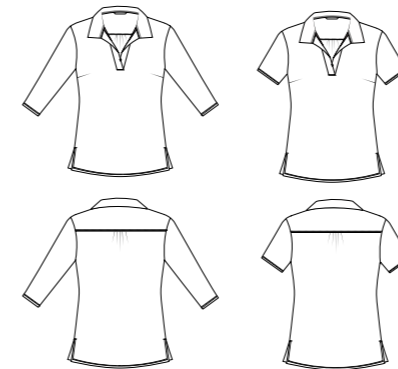
Womens: 2270 Short Sleeve
Breathable Polyester



BLUE

ELLA

Womens: 2273 3/4 Sleeve, **2274** Short Sleeve
Polyester Matte Jersey



NAVY

CHARCOAL

ROYAL

BLACK

BELLA

Womens: 2275 3/4 Sleeve, **2276** Short Sleeve
Polyester Matte Jersey



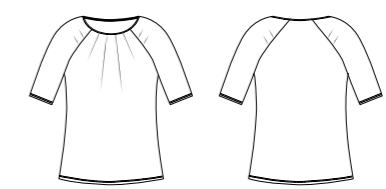
NAVY

BLACK

ROYAL

PETAL PRINT

Womens: 2277 Short Sleeve
Recycled Polyester/Polyester, 5% Spandex



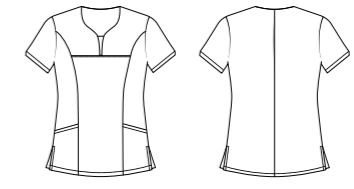
NAVY/WHITE

NAVY/BLUE

BLACK/WHITE

4-WAY STRETCH TUNIC

Womens: 2280 Short Sleeve
Recycled Polyester, 5% Spandex Anti-Bacterial



ROYAL

NAVY

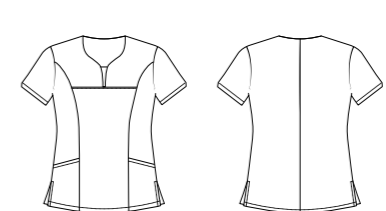
BLACK

CHARCOAL

TEAL

HEART PRINT TUNIC

Womens: 2281 Short Sleeve
Recycled Polyester, 5% Spandex Anti-Bacterial

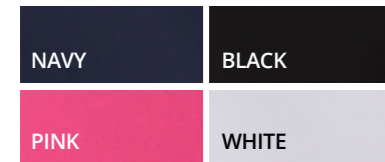
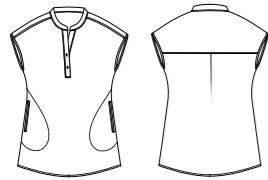


BLUE

CHRISSY



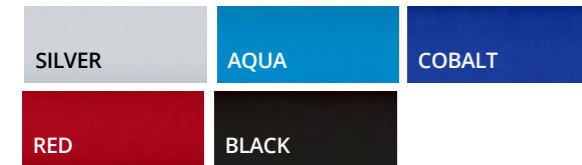
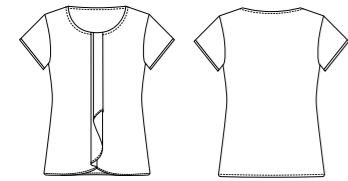
Womens 2283 Drop Shoulder
Recycled Polyester, 5% Spandex Anti-Bacterial



CASCADE



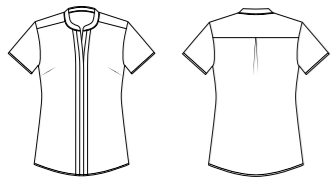
Womens: 2285 Short Sleeve Outer (woven) - Polyester
Inner (knit) - 95% Polyester, 5% Spandex



ENVY



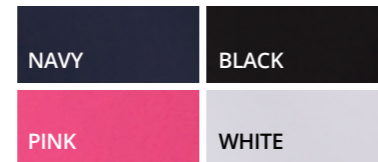
Womens: 2288 Short Sleeve
Polyester



ZIP BACK TUNIC



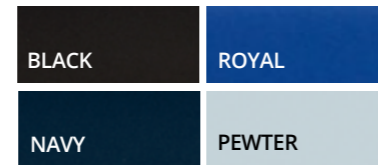
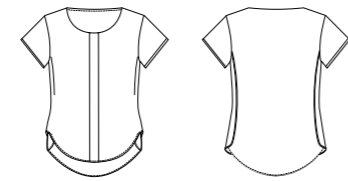
Womens: 2284 Short Sleeve
Recycled Polyester, 5% Spandex Anti-Bacterial



GRACE



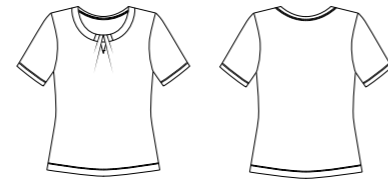
Womens: 2287 Short Sleeve
Outer: Polyester Luxury Crepe. Inner: Polyester/Spandex



KEYHOLE KNIT



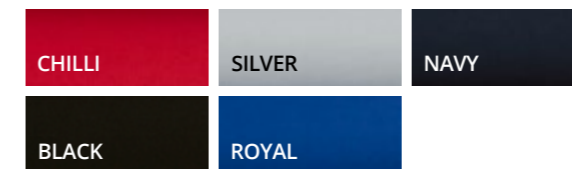
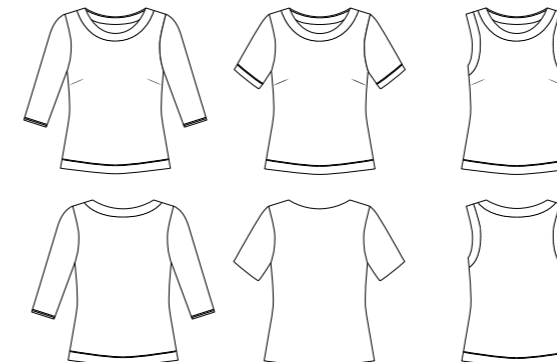
Womens: 2295 Short Sleeve
95% Polyester, 5% Spandex



SMART KNIT

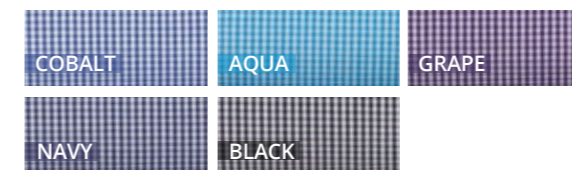


Womens: 2290 3/4 Sleeve, **2291** Short Sleeve
2292 Sleeveless. Polyester Matte Jersey



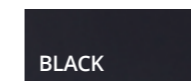
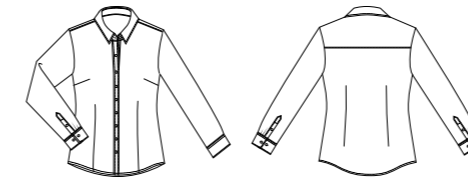
PIPPA CHECK

Womens: 2444 3/4 Sleeve
60% Cotton, 40% Polyester



OLIVIA

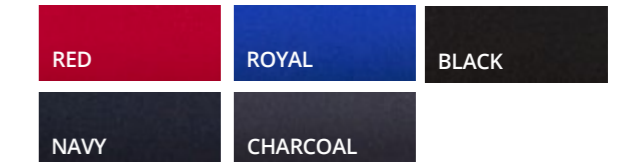
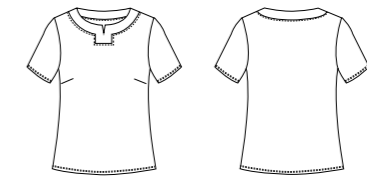
Womens: 2773 Long Sleeve
65% Cotton, 30% Polyester, 5% Spandex



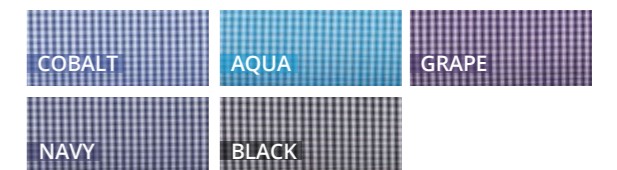
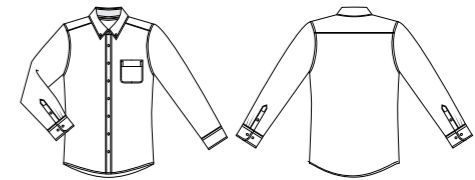
KNIT WOVEN



Womens: 2299 Short Sleeve
Front - 100% So Ezy Polyester,
Back - 94% Polyester, 6% Elastane

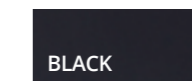
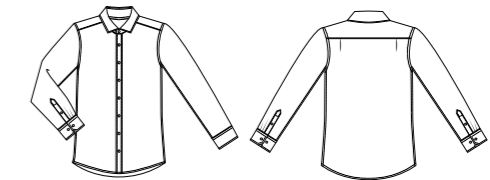


Mens: 4222 Long Sleeve
60% Cotton, 40% Polyester



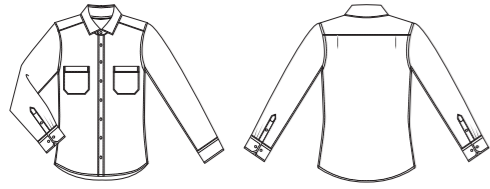
OLIVER

Mens: 4773 Long Sleeve
65% Cotton, 30% Polyester, 5% Spandex



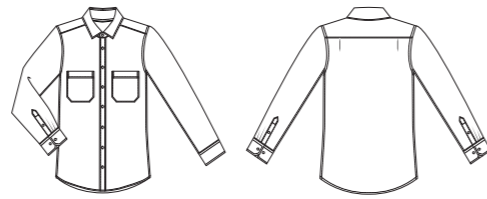
DENIM SHIRT

Womens 2774 Long sleeve
65% Lyocell, 35% Cotton



DENIM

Mens 4774 Long sleeve
65% Lyocell, 35% Cotton

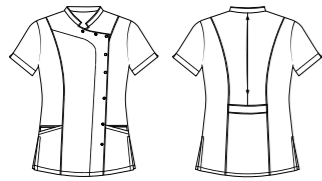


DENIM

PHARMACY/DENTAL TOP



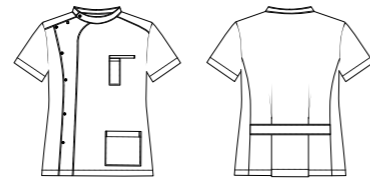
Womens: CA22T Short Sleeve
Recycled Polyester, 5% Spandex Anti-Bacterial



WHITE

BLACK

Mens: CA44T Short Sleeve
Recycled Polyester, 5% Spandex Anti-Bacterial

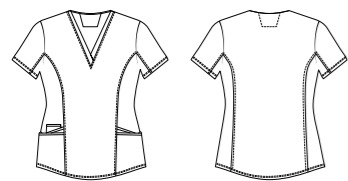


WHITE

CITY ACTIVE 2



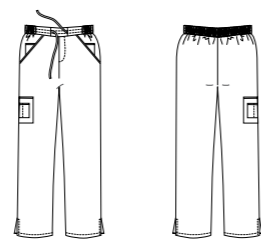
Womens: CA2T Short Sleeve
Body - Recycled Polyester, 5% Spandex Anti-Bacterial
Side Panel - Polyester Anti-Bacterial



NAVY/NAVY

ROYAL/NAVY

Womens: CA2P
Pants - Recycled Polyester, 5% Spandex Anti-Bacterial
Inner Pocket - Polyester Anti-Bacterial



NAVY

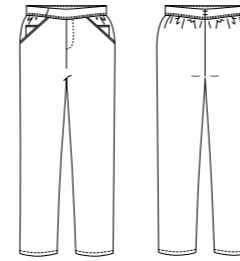
BLACK

CHARCOAL

SO EZY PANT



Womens: CA3P
Recycled Polyester, 5% Spandex Anti-Bacterial



NAVY

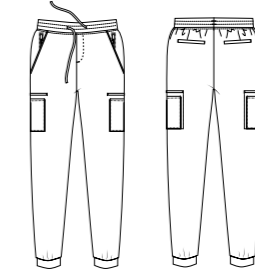
BLACK

CHARCOAL

JOGGER



Womens: CA7P
Recycled Polyester, 5% Spandex Anti-Bacterial



NAVY

BLACK

PINK

THE R JEANS



Womens: FJ365
64% Cotton, 34% Recycled Polyester, 2% Spandex

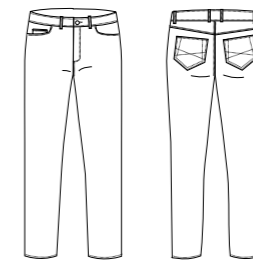


BLACK

LATTE

DENIM

Mens: MJ365
64% Cotton, 34% Recycled Polyester, 2% Spandex



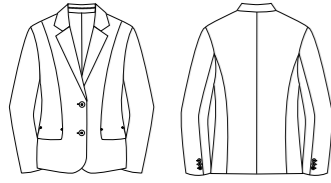
BLACK

LATTE

DENIM

DIANNA

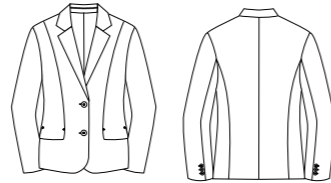
Womens: FJK35-992 Fully lined jacket
Sorbtek® Polyester



BLACK

NAVY

Womens: FJK35-4060 Fully lined jacket
60% Polyester, 40% Wool



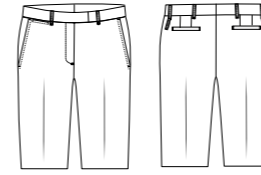
BLACK

NAVY

CHARCOAL

NATASHA

Womens: FPA38-992 Flexi waist short
Sorbtek® Polyester

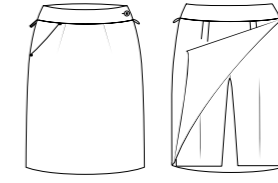


BLACK

NAVY

CHARLOTTE

Womens: FSK43-896 Classic skort
Polyester/Rayon

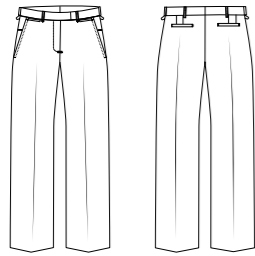


BLACK

NAVY

SAMANTHA

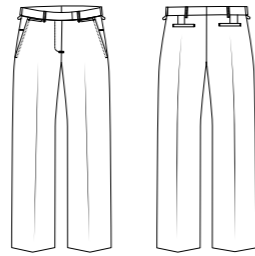
Womens FPA22-992 Classic pant with flexi waist
Sorbtek® Polyester



BLACK

NAVY

Womens FPA22-4060 Classic pant with flexi waist
60% Polyester, 40% Wool



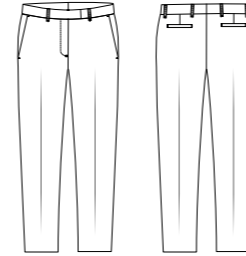
BLACK

NAVY

CHARCOAL

GRACIE

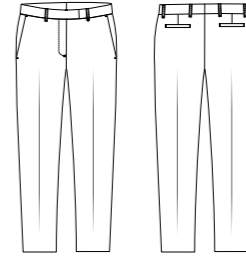
Womens: FPA41-992 Slim leg pant
Sorbtek® Polyester



BLACK

NAVY

Womens: FPA41-4060 Slim leg pant
60% Polyester, 40% Wool



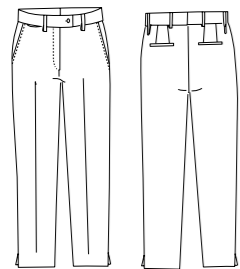
BLACK

NAVY

CHARCOAL

CHLOE

Womens: FPA36-992 7/8 pant with flexi waist
Sorbtek® Polyester

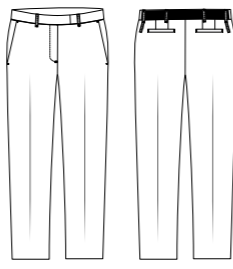


BLACK

NAVY

MIRANDA

Womens: FPA40-992 Pant with exposed
elastic back waist. Sorbtek® Polyester

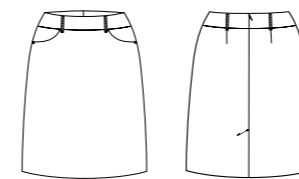


BLACK

NAVY

MADDI

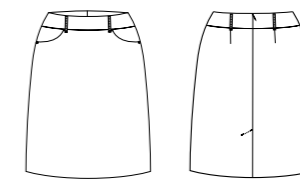
Womens: FSK45-992 Knee length front pocket skirt
Sorbtek® Polyester



BLACK

NAVY

Womens: FSK45-4060 Knee length front pocket skirt
60% Polyester, 40% Wool



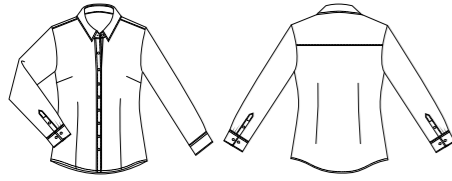
BLACK

NAVY

CHARCOAL

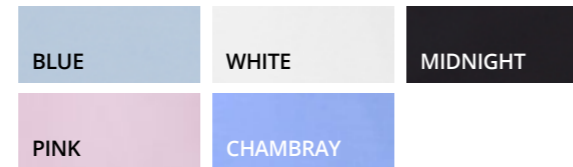
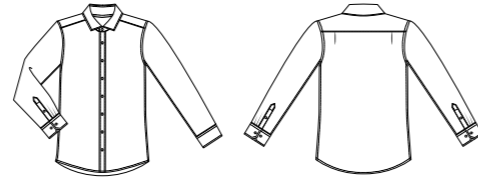
COTTON COMFORT

Womens: FSH70 Long Sleeve
Polyester/Cotton



Pink and Chambray available upon request.

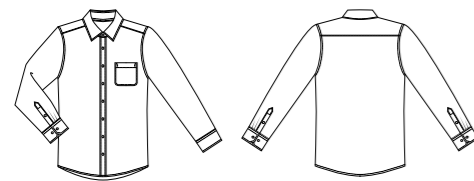
Mens: MSH80 Long Sleeve
Polyester/Cotton



Pink and Chambray available upon request.

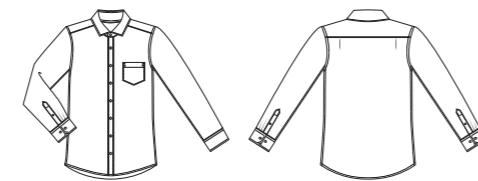
CAPRI CHECK

Mens: 4111 Long Sleeve
100% Superfine Cotton



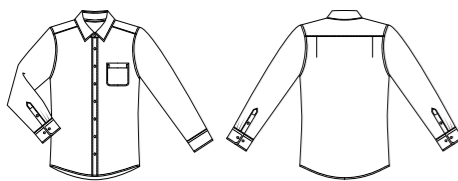
SHADOW CHECK

Mens: 4182 Long Sleeve
55% Cotton, 45% Polyester



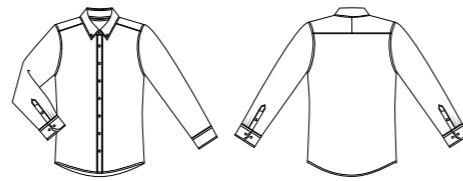
TWILL SHIRT

Mens: 4200 Long Sleeve
60% Cotton, 40% Polyester



GINGHAM CITY CHECK

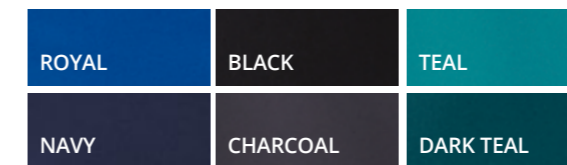
Mens: 4207 Long Sleeve
100% Cotton with Natural Stretch



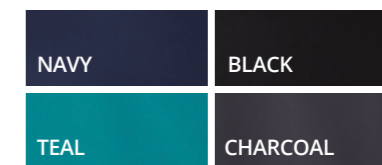
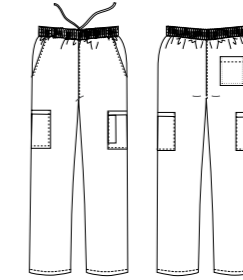
CITY ACTIVE



Mens: CA4T Short Sleeve
Recycled Polyester, 5% Spandex Anti-Bacterial

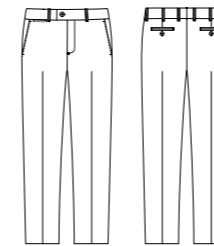


Mens: CA4P Pants
Recycled Polyester / Polyester, 5% Spandex Anti-Bacterial



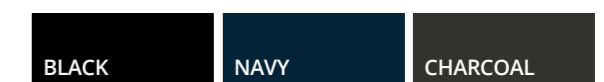
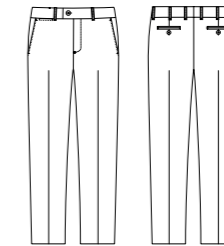
HARRY

Mens: MTRO-690 Flexi Waist Trousers
80% Polyester, 20% Viscose



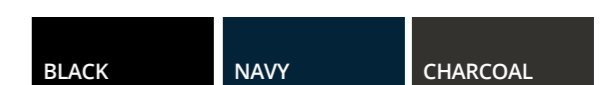
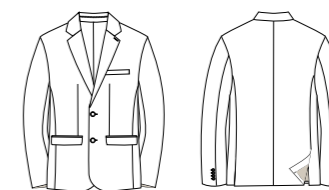
WILL

Mens: MTRO-4060 Flexi Waist Trousers
60% Polyester, 40% Wool



CHARLES

Mens: MSC2-4060 2-Button Jacket
60% Polyester, 40% Wool



GARMENT SIZING GUIDE

WOMENS SHIRTS

Size	4	6	8	10	12	14	16	18	20	22	24	26	28	30
Bust /cm	78	83	88	93	98	103	109	115	121	127	133	139	145	151

WOMENS KNIT TOPS

Size	XXS	XS	S	M	L	XL	2X	3X	4X	5X
	6	8-10	10-12	12-14	14-16	18-20	20-22	22-24	24-26	26-28

BUST MEASUREMENTS

Keeping your tape measure untwisted and level, run the tape tight up under your armpits and around the fullest, most protruding point of the bust. Hold one finger under the tape measure to ensure some room for comfort. Keep tape measure taut but not too tight.

WOMENS JEANS

Size	6	8	10	12	14	16	18	20	22	24	26
Waist /cm	63	68	73	78	83	88	94	100	106	112	118
Hip /cm	90	95	100	105	110	115	121	127	133	139	145

WOMENS ACTIVE PANTS

Size	XXS	XS	S	M	L	XL	2X	3X	4X
	6	8-10	10-12	12-14	14-16	18-20	20-22	22-24	26

MENS SIZING

Neck Size	38	39	40	41	42	43	44	46	48	50	52
Size	S	M	M	L	L	XL	XL	2XL	3XL	4XL	5XL
Chest /cm	95	100	100	105	105	110	110	115	120	125	130

NECK MEASUREMENTS

Place the measuring tape around the neck at collar height - just below the Adam's apple. Hold one finger under the tape measure to ensure some room for comfort. Keep tape measure taut but not too tight.

CHEST MEASUREMENTS

Keeping your tape measure untwisted and level, run the tape tight up under your armpits, over the shoulder blades and around the fullest part of the chest. Hold one finger under the tape measure to ensure some room for comfort. Keep tape measure taut but not too tight. Do not puff out your chest.

MENS JEANS

Waist /in	30	32	34	36	38	40	42	44	46
Waist /cm	77	82	87	92	97	102	107	112	117

NOTE: Size charts are body measurements. The garment will measure larger than the body to allow ease and comfort.

WOMENS SHIRTS

ACTION FIT

This is a more relaxed fit, straight through the body and longer. It is generally worn out, not tucked in. Suitable for the slightly fuller figure.

SEMI FITTED

This style is shaped through the body with room to move. It is neither too slim nor too loose and can be worn tucked or untucked. This fit is suitable for most body types.

FITTED

A slimmer silhouette that fits more closely to the body.

MENS SHIRTS

FULL CUT

This is the most generous of all fits. All garments have a box pleat in the back yoke for extra movement.

CLASSIC FIT

Very similar to the Full Cut but narrower in the shoulders and slightly slimmer in the waist. Two side pleats in the back yoke.

TAILORED FIT

Slightly tapered through the body but still quite generous. Suitable for most body shapes. No pleats in the back yoke.

SPORTS FIT

Similar to our Tailored Fit but has a straighter body which is more generous through the waist. No pleats in back.

CITY FIT

Slightly slimmer than our Sports Fit through the chest, shoulders and waist. Longer in length to stay tucked in. Two side pleats in the back yoke.

SLIM FIT

Our slimmest mens fit. A slimmer silhouette that fits more closely to the body.

INDEX

Style DescriptionPage No

WOMENS SHIRTS

2104	Shadow Stripe	35, 112
2121	Micro Check	34, 112
2144	Shadow Stripe	35, 112
2145	Ezylin	104, 113
2146	Ezylin	104, 113
2147	Ezylin Meghan	5, 6, 11, 40, 49, 112
2148	Ezylin Maternity Meghan	49, 112
2149	Ezylin Overblouse	105, 113
2172	City Stretch Spot	81, 109, 113
2173	City Stretch Spot	109, 113
2175	City Stretch Spot Hi-Lo	12, 108
2192	Drift Print	81, 114
2211	Meghan	36, 48, 114
2215	Sophia	50-51, 115
2257	Xpresso	24, 115
2258	Xpresso	25, 115
2260	City Stretch Classic	32, 116
2261	City Stretch Classic	32, 116
2262	City Stretch Classic	32, 116
2263	So Ezy	9, 28-29, 116
2264	City Stretch Pinfeather	17, 27, 116
2265	City Stretch Pinfeather	26, 116
2267	City Stretch Pinfeather	16, 26, 70, 116
2270	Ezylin Dual Pocket Stripe	105, 117
2288	Envy	52-53, 118
2444	Pippa Check	30-31, 119
2773	Olivia	19, 119
2774	Denim Shirt	10, 120
FSH70	Cotton Comfort	20-21, 124

WOMENS TOPS

2221	Pippa Knit	38-39, 114
2222	Pippa Knit	9, 38, 114
2226	Eva Knit	58, 115
2227	Eva Knit	58, 115
2273	Ella	11, 46, 117
2274	Ella	46-47, 117
2275	Bella	11, 45, 117
2276	Bella	44-45, 117
2277	Petal Print	41, 72, 80-81, 117
2285	Cascade	59, 118
2287	Grace	9, 42-43, 68, 118
2290	Smart Knit	57, 119
2291	Smart Knit	56-57, 119
2292	Smart Knit	57, 119
2295	Keyhole Knit	54, 118
2299	Knit Woven	9, 55, 119

WOMENS KNITS

2225	City Overknit	12, 40, 115
------	---------------------	-------------

WOMENS BOTTOMS

CA3P	So Ezy Pant	7, 73, 79, 95, 121
CA7P	Jogger	14, 42, 78, 92-93, 113, 121
FJ365	R Jeans	5-7, 10-12, 16-17, 121

Style DescriptionPage No

MENS SHIRTS + TOPS

4102LS	Micro Check	34, 60, 112
4102SS	Micro Check	60, 112
4104LS	Shadow Stripe	35, 64, 112
4104SS	Shadow Stripe	64, 112
4111	Capri Check	61, 124
4145	Ezylin Mens	11, 67, 105, 113
4182	Shadow Check	61, 124
4200	Twill Shirt	33, 37, 63, 68, 124
4207	Gingham City Check	3, 11, 22-23, 62, 124
4222	Pippa Check	3, 30-31, 63, 119
4257	Xpresso	24-25, 65, 115
4263	So Ezy Check	28-29, 62, 116
4265	Pinfeather	3, 16, 26-27, 65, 116
4773	Oliver	12, 18, 66, 119
4774	Denim Shirt	3, 10, 120
MSH80	Cotton Comfort	3, 13, 20-21, 66, 124
CA4T	City Active Top	67, 96, 125

MENS BOTTOMS

MJ365	R Jeans	10-13, 121
-------	---------------	------------

WOMENS SUITING

FJK35-992	Dianna	5, 11, 70, 122
FJK35-4060	Dianna	5, 11, 70, 122
FPA22-992	Samantha	71, 122
FPA22-4060	Samantha	71, 122
FPA36-992	Chloe	71, 122
FPA38-992	Natasha	73, 123
FPA40-992	Miranda	71, 122
FPA41-992	Gracie	71, 123
FPA41-4060	Gracie	71, 123
FSK43-896	Charlotte	73, 123
FSK45-992	Maddi	20, 68, 70, 72-73, 80, 123
FSK45-4060	Maddi	20, 68, 70, 72-73, 80, 123

MENS SUITING

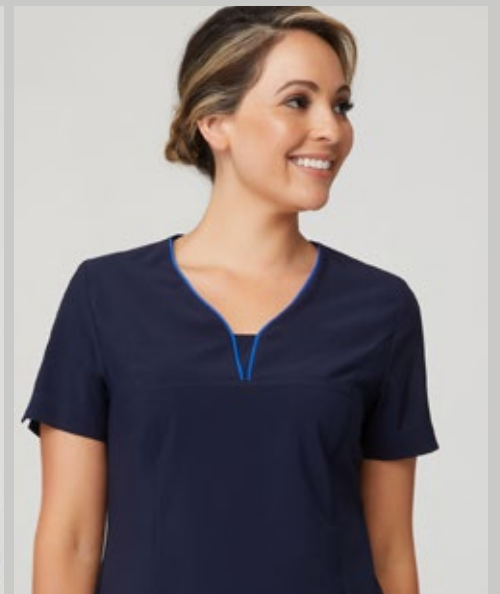
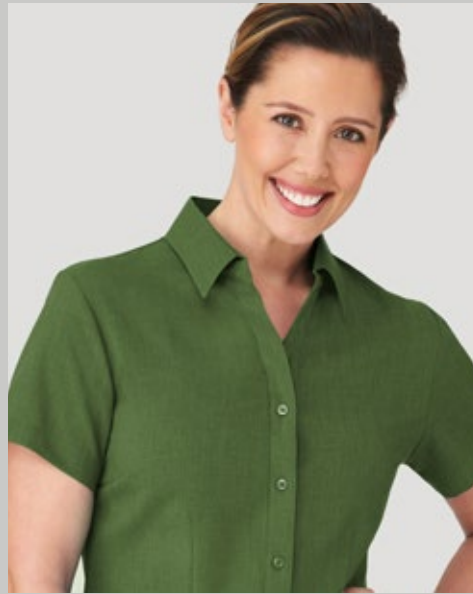
MSC2-4060	Charles	68, 74, 125
MTRO-4060	Will	16, 20, 68, 74-75, 125
MTRO-690	Harry	16, 20, 68, 74-75, 125

WOMENS SCRUBS

2151	Ezylin Tunic	103, 105, 114
2174	City Stretch Spot Tunic	79, 95, 107-108, 114
2230	City Health Active	111, 115
2280	4-Way Stretch Tunic	76, 88-89, 117
2281	Heart Print Tunic	9, 80-81, 83, 117
2283	Chrissy	86-87, 118
2284	Zip Back Tunic	7-8, 14, 78, 84-85, 92, 113, 118
CA22T	Pharmacy/Dental Top	7, 101, 120
CA2T	City Active 2 Top	90-91, 94, 120
CA2P	City Active 2 Pant	80, 91, 94, 120
CA3P	So Ezy Pant	7, 73, 79, 95, 121
CA7P	Jogger	14, 42, 78, 92-93, 113, 121

MENS SCRUBS

CA4T	City Active Top	79, 96-97, 125
CA4P	City Active Pant	79, 96-97, 98-99, 125
CA44T	Pharmacy/Dental Top	100, 120



www.citycollection.com.au

Colours are as close as possible to actual fabric colours but should be used as a guide only. City Collection reserve the right to update and improve the styling of items featured in our catalogue. The design and layout of this catalogue is subject to copyright©.

CITYCOLLECTION

— AUSTRALIA —

DRESSING FOR WORK MADE EASY